

SAMSUNG

GPRS GSM TELEPHONE SGH-Q200

SERVICE *Manual*

GPRS GSM TELEPHONE



CONTENTS

1. Electrical Parts List
2. Exploded Views and Parts List
3. Block Diagrams
4. PCB Diagrams
5. Flow Chart of Troubleshooting and Circuit Diagrams

1. SGH-Q200 MAIN Electrical Parts List

Level	SEC Code	Design LOC	DESCRIPTIONS
0	SGH-Q200		
1	6001-000464		SCREW-MACHINE PH, +, M1.4, L4, BLACK, SM10C, -
1	6001-001346		SCREW-MACHINE BH, OCTA, M1.7, L5, ZPC(BLK), SWRCH18A, FP
1	GH39-00118A		CBF INTERFACE-DATA LINK SGH-Q200, -, -, 800 MM, -, BLK, -, -, -, DATA LINK
1	GH43-00376A		BATTERY-900MA, SIL, ENG, MA 1LP473465B/900MAH-SIL, SGH-Q200, LIHON,
1	GH44-00184A		ADAPTOR-SGHN288 TAD TAD037EBE, SGH-N288, 110V~240 V, -, 5.2 V, AC/DC
1	GH46-00013A		SW UTILITY-SGHQ100 SGH-Q100, SGH-Q100, -, 1.0, -, CD, 1CD, -, ENGLISH
1	GH59-00261A		UNIT-SGHQ200 EARPHONE SGH-Q200, EM-SS200Q, -, EAR PHONE, -,
1	GH68-02528A		MANUAL-MAIN SGH-Q200, SAMSUNG, ENGLISH, UNKD, -, -, -, -, -, -
1	GH68-02530A		MANUAL-GPRS WIZARD SGH-Q200, SAMSUNG, ENGLISH, UNKD, -, -,
1	GH68-02531A		MANUAL-MAIN SGH-Q200, SAMSUNG, GERMAN, GERM, -, -, -, -, -, -
1	GH68-02533A		MANUAL-GPRS WIZARD SGH-Q200, SAMSUNG, GERMAN, GERM, -, -,
1	GH68-02534A		MANUAL-WAP SGH-Q200, DI, ENGLISH, GERM, -, -, -, -, -, -
1	GH68-02535A		MANUAL-WAP SGH-Q200, DI, GERMAN, GERM, -, -, -, -, -, -
1	GH68-02606A		MANUAL-PBCCH CARD SGH-Q200, SAMSUNG, ENGLISH, UNKD, -, -, -,
1	GH68-70545A		MANUAL-WARRANTY SGH-200, SAMSUNG, UNKD
1	GH73-00703A		RMO-RF JACK COVER SGH-Q200, RUBBER, -, W/SIL, -, -
1	GH73-00704A		RMO-COVER CONNECTOR SGH-Q200, RUBBER, -, W/SIL, -, -
1	GH74-00731A		MPR-WINDOW BOHO TAPE SCH-A300, VINYL, T0.2, -, -
1	GH74-01635A		MPR-WINDOW BHO VINYL SCH- X 230, VINYL, T0.1, -, -
1	GH75-01100A		MEC-VOLUME KEY SGH-Q200, -, -, -, NI, -, -
2	GH72-02479A		PMO-VOLUME KEY SGH-Q200, -, ABS, NI, -, -, -
2	GH73-00701A		RMO-VOLUME KEY SGH-Q200, RUBBER, -, BLK, -, -
1	GH75-01583A		MEC-SHIELD COVER SGH-Q200, -, PC, -, -, -, GERM, -
2	GH72-02492A		PMO-SHIELD COVER B SGH-Q200, -, ABS, NI PLT, -, -, -
2	GH74-02069A		MPR-SHIELD COVER TAPE SGH-Q200, SHIELD TAPE, T0.15, SIL, -, -, -,
1	GH75-01735A		MEC-SHIELD COVER B SGH-Q200, -, -, -, NI, -, GERM, -
1	GH92-00951A		PBA MAIN-SGHQ200 SGH-Q200, SEU K, UNKD, -, -, -, -, -, -
2	GH41-00210A		PCB-SGHQ200 MAINSGH-Q200, FR-4, 8L, S1.4, 0.9T, 100 X 158 MM, -, -
2	GH71-00077A		NPR-ANT.CONTACT SGH-A100, KSP5202, T0.1, AU
2	GH73-00270A		RMO-CONTACT RUBBER SGH-A100, RUBBER, 2.0 X 3 X T0.5, BLK, -
1	GH97-01918A		MEA FRONT-COVER SGH-Q200, SAMSUNG, GERM, W/SIL, -, -, -
2	6001-000883		SCREW-MACHINE PH, +, M1.4, L5, ZPC(BLK), SWRCH18A, FP, P0.35
2	GH07-00093A		LCD-SGHQ200 UG-12D24-FGHTX-A, SGH-Q200, 128 X 128DOTS, 38.4 X 62.85
2	GH59-00138A		UNIT-SPHN2000 MIC ASS'Y SPH-N2000, OBG-15S44-C1033, -, MIC ASSY, -, -, -,
2	GH59-00272A		UNIT-SGHQ200 CON ASSY SGHQ200, KBSGHQ200C, -, CONN, FPCB, -, ASSY
2	GH59-00273A		UNIT-SGHQ200 KEYPAD SGH-Q200, KBSGHQ200, -, KEYPAD, -, ASSY
2	GH68-00370C		LABEL(R)-DUMMY SPH-A1000, PC SHEET, PI4.4, T0.3, -

Level	SEC Code	Design LOC	DESCRIPTIONS
2	GH71-00476A		NPR-SHIELD COVER A SGH-Q200, ZN GOLD PLT, -, NI, -
2	GH72-02482A		PMO-DUAL LCD WINDOW SGH-Q200, -, ACRYL, SIL, -, -, -
2	GH72-02484A		PMO-LCD WINDOW SGH-Q200, -, ACRYL, SIL, -, -, -
2	GH74-01268A		MPR-SUPPORT BUZZER SGH-N288, PORON , P18 X T0.5, BLK, -
2	GH74-01635A		MPR-WINDOW BHO VINYL SCH- X 230, VINYL, T0.1, -, -
2	GH74-02066A		MPR-DUAL LCD SPONGE 2 SGH-Q200, PORON, 37.6 X 32.7 X T1, BLK,
2	GH74-02070A		MPR-CON SHIELD TAPE SGH-Q200, SHIELD TAPE, 9 X 6 X T0.4, SIL, -,
2	GH74-02251A		MPR-SPEAKER TAPE SGH-Q200, COPPER TAPE, 19 X 4 X T0.1, -, -, -, -
2	GH74-02252A		MPR-LED SPONGE SGH-Q200, SPONGE, 5 X 5.9 X T1, BLK, -, -, -, -
2	GH74-02399A		MPR-F/UPPER BOHO VINYL SGH-Q200, VINYL, -, TRP, -, -, -, -
2	GH75-01097A		MEC-FRONT COVER SGH-Q200, SAMSUNG, -, -, W/SIL, -, -
3	GH71-00635A		NDC-HINGE DUMMY -, SGH-Q200, ZN GOLD PLT, -, -, -, -, -, NI, -
3	GH72-02472A		PMO-FRONT COVER SGH-Q200, -, PC, W/SIL, -, -, -
3	GH72-02473A		PMO-LED REFLECTOR SGH-Q200, -, PET, TRP, -, -, -
3	GH72-03010A		PMO-NAVI. DUMMY SGH-Q200, PC, SIL, -, -, -, -, -
3	GH73-00705A		RMO-FOLDER HOLDER SGH-Q200, RUBBER, -, W/SIL, -, -
3	GH74-02064A		MPR-NAV DUMMY TAPE SGH-Q200, TAPE, T0.15, TRP, -, -, -, -
3	GH74-02065A		MPR-LED SHIELD SPONGE SGH-Q200, SHIELD SPONGE, 4 X 4 X T3, SIL, -, -, -
2	GH75-01099A		MEC-KEY PAD SGH-Q200, -, -, -, EF TYPE, -, -
3	GH72-02475A		PMO-I KEY SGH-Q200, -, ABS, TRP, -, -, -
3	GH72-02476A		PMO-NAV KEY SGH-Q200, -, ABS, W/SIL, -, -, -
3	GH72-02477A		PMO-FUN KEY SGH-Q200, -, ABS, W/SIL, -, -, -
3	GH72-02478A		PMO-KEY PAD SGH-Q200, -, EF TYPE, W/SIL, -, -, -
2	GH75-01101A		MEC-FOLDER UPPER SGH-Q200, -, -, -, W/SIL, -, -
3	GH72-02481A		PMO-FOLDER UPPER SGH-Q200, -, PC, W/SIL, -, -, -
3	GH74-01390A		MPR-SPONGE DUAL LCD SGH-Q200, SPONGE, T1, BLK, -
3	GH74-01391A		MPR-DUAL WINDOW TAPE SGH-Q200, TAPE, T0.1, TRP, -
2	GH75-01102A		MEC-FOLDER LOWER SGH-Q200, -, -, -, W/SIL, -, -
3	GH72-02483A		PMO-FOLDER LOWER SGH-Q200, -, PC, W/SIL, -, -, -
3	GH74-00258A		MPR-TAPE MOTOR SGH-A100, TESA, T0.4, BLK, -
3	GH74-01392A		MPR-SPONGE LCD SGH-Q200, SPONGE, T1, BLK, -
3	GH74-01394A		MPR-WINDOW TAPESGH-Q200, TAPE, T0.1, TRP, -
3	GH75-01087A		MEC-HINGE SCH- X 210, -, -, -, IVR, -, -
4	GH70-00020A		IPR-SPRING HINGE SCH-A100, STS304, -, PI4.5 X PI0.7 X 8.2, -, -, -, -
4	GH72-00291A		PMO-SHAFT HINGE SCH-A100, POM, BLK, -, -
4	GH72-00292A		PMO-CAM HINGE SCH-A100, POM, BLK, -, -
4	GH72-00861A		PMO-HINGE HOUSING SCH-850, PC, SIL, -, -
1	GH97-01919A		MEA REAR-COVER SGH-Q200, SAMSUNG, GERM, W/SIL, -, -, -
2	GH42-00138A		ANTENNA-SGHQ200 GRY SGH-Q200 ANTENNA, SGH-Q200, 890-960MHZ, -

Level	SEC Code	Design LOC	DESCRIPTIONS
2	GH75-01103A		MEC-REAR COVER SGH-Q200, -, -, -, W/SIL, -, -
3	GH70-00038A		IPR-SPRING LOCKER SPH-A1004, STS304, -, PI2.4 X 6, -, -, -, -, -
3	GH71-00475A		NPR-ANT BUSHING SGH-Q200, ZN GOLD PLT, -, AU, -
3	GH72-02485A		PMO-REAR COVER SGH-Q200, -, PC, W/SIL, -, -, -
3	GH72-02486A		PMO-BATT LOCKER SGH-Q200, -, PC, W/SIL, -, -, -
3	GH73-00702A		RMO-EAR JACK COVER SGH-Q200, RUBBER, -, W/SIL, -, -
3	GH74-02044A		MPR-BUZZER SGH-Q200, HIMERON, 6.8 X 4 X T0.4, -, -, -, -, -
3	GH74-02067A		MPR-REAR SPONGE SGH-Q200, SPONGE, 10 X 9.1 X T2, BLK, -, -, -, -
3	GH74-02068A		MPR-REAR SHIELD SPONGE SGH-Q200, SHIELD SPONGE, 5.5 X 10 X T2, SIL,
1	GH99-02458A		PAA MAIN-GERM SGH-Q200, DTM, GERM, -, -, -
2	GG68-10705A		LABEL(P)-SEAL SP-R912, CRP, 65.0 x 95.0, -, ORG
2	GH68-00518B		LABEL(P)-SEAL SGH-A100, ART, 100G, 46, 34, -, WHT, -, -, -
2	GH68-01778A		LABEL(P)-BARCODE SHIPPING SGH-A100, ART, 100G, 250, 100, -, WHT, -, -, -
2	GH68-02107A		LABEL(R)-MAIN SGH-Q200, MAT, T0.05, 41, 33, -, SIL, -, -, -
2	GH68-02190A		LABEL(P)-IMEI BARCODE(GERM) SGH-Q100, ART, 100G, 100, 90, -, WHT, -, -, -
2	GH69-00842A		BAG-VINYL HANDSET SGH-A300, LDPE, T0.06, 80, 170, TRP, -
2	GH69-00963A		BOX (P)-UNIT MAIN STND SGH-Q200, SC300+E(KOL), -, -, -, -, -, 210 X 160 X 97
2	GH69-00966A		CUSHION-CASE SGH-Q200, PULP, T1.3, -, -, -, -, -, 193 X 155 X 71
2	GH69-01066A		BOX (P)-MASTER MAIN SGH-Q200, SW5, -, -, -, -, -, 505 X 329 X 206
2	3002-001121	AU501	BUZZER-MAGNETIC 88DB, 3.6 V, 120MA, 2700HZ, TP
2	2404-001239	C1001	C-TA, CHIP 100 UF, 20 %, 6.3 V, WT, TP, 3.3 X 2.7 X 1.7 MM
2	2404-001239	C1002	C-TA, CHIP 100 UF, 20 %, 6.3 V, WT, TP, 3.3 X 2.7 X 1.7 MM
2	2404-001239	C1003	C-TA, CHIP 100 UF, 20 %, 6.3 V, WT, TP, 3.3 X 2.7 X 1.7 MM
2	2203-001239	C1005	C-CERAMIC, CHIP 0.082 nF, 5 %, 50 V, NP0, TP, 1005
2	2203-000696	C1006	C-CERAMIC, CHIP 0.002 nF, 0.25 pF, 50 V, NP0, TP, 1005
2	2203-000254	C1008	C-CERAMIC, CHIP 10 nF, 10 %, 16 V, X7R, TP, 1005, -
2	2203-000254	C1009	C-CERAMIC, CHIP 10 nF, 10 %, 16 V, X7R, TP, 1005, -
2	2203-005571	C101	C-CERAMIC, CHIP 10000 NF, +80-20 %, 6.3 V, Y5 V, TP, 2012
2	2203-005050	C1010	C-CERAMIC, CHIP 0.0018 nF, 0.25 pF, 50 V, NP0, TP, 1005
2	2203-000995	C1011	C-CERAMIC, CHIP 0.047 nF, 5 %, 50 V, NP0, TP, 1005
2	2203-000233	C1012	C-CERAMIC, CHIP 0.1 nF, 5 %, 50 V, NP0, TP, 1005
2	2203-000812	C1013	C-CERAMIC, CHIP 0.033 nF, 5 %, 50 V, NP0, TP, 1005
2	2203-001072	C1014	C-CERAMIC, CHIP 0.056 nF, 5 %, 50 V, NP0, TP, 1005
2	2203-001239	C1015	C-CERAMIC, CHIP 0.082 nF, 5 %, 50 V, NP0, TP, 1005
2	2203-000696	C1016	C-CERAMIC, CHIP 0.002 nF, 0.25 pF, 50 V, NP0, TP, 1005
2	2203-001124	C1017	C-CERAMIC, CHIP 680 pF, 10 %, 50 V, X7R, TP, 1005, -
2	2203-000254	C1019	C-CERAMIC, CHIP 10 nF, 10 %, 16 V, X7R, TP, 1005, -
2	2203-005065	C102	C-CERAMIC, CHIP 1000 nF, +80-20 %, 10 V, Y5 V, TP, 1608
2	2203-000696	C1020	C-CERAMIC, CHIP 0.002 nF, 0.25 pF, 50 V, NP0, TP, 1005

Level	SEC Code	Design LOC	DESCRIPTIONS
2	2203-000628	C1021	C-CERAMIC, CHIP 0.022 nF, 5 %, 50 V, NP0, TP, 1005
2	2203-000696	C1022	C-CERAMIC, CHIP 0.002 nF, 0.25 pF, 50 V, NP0, TP, 1005
2	2203-001239	C1023	C-CERAMIC, CHIP 0.082 nF, 5 %, 50 V, NP0, TP, 1005
2	2203-001124	C1024	C-CERAMIC, CHIP 680 pF, 10 %, 50 V, X7R, TP, 1005, -
2	2203-000254	C1028	C-CERAMIC, CHIP 10 nF, 10 %, 16 V, X7R, TP, 1005, -
2	2203-005053	C1029	C-CERAMIC, CHIP 0.0039 nF, 0.25 pF, 50 V, NP0, TP, 1005
2	2203-005571	C103	C-CERAMIC, CHIP 10000 NF, +80-20 %, 6.3 V, Y5 V, TP, 2012
2	2203-000254	C1030	C-CERAMIC, CHIP 10 nF, 10 %, 16 V, X7R, TP, 1005, -
2	2203-000330	C1031	C-CERAMIC, CHIP 0.012 nF, 5 %, 50 V, NP0, TP, 1005
2	2203-000233	C1036	C-CERAMIC, CHIP 0.1 nF, 5 %, 50 V, NP0, TP, 1005
2	2203-000233	C1037	C-CERAMIC, CHIP 0.1 nF, 5 %, 50 V, NP0, TP, 1005
2	2203-000233	C1038	C-CERAMIC, CHIP 0.1 nF, 5 %, 50 V, NP0, TP, 1005
2	2203-000233	C1039	C-CERAMIC, CHIP 0.1 nF, 5 %, 50 V, NP0, TP, 1005
2	2203-005065	C104	C-CERAMIC, CHIP 1000 nF, +80-20 %, 10 V, Y5 V, TP, 1608
2	2203-001383	C1040	C-CERAMIC, CHIP 0.0005 nF, 0.25 pF, 50 V, NP0, TP, 1005
2	2203-000233	C1041	C-CERAMIC, CHIP 0.1 nF, 5 %, 50 V, NP0, TP, 1005
2	2203-000812	C1044	C-CERAMIC, CHIP 0.033 nF, 5 %, 50 V, NP0, TP, 1005
2	2203-000812	C1045	C-CERAMIC, CHIP 0.033 nF, 5 %, 50 V, NP0, TP, 1005
2	2203-005571	C105	C-CERAMIC, CHIP 10000 NF, +80-20 %, 6.3 V, Y5 V, TP, 2012
2	2203-001383	C1050	C-CERAMIC, CHIP 0.0005 nF, 0.25 pF, 50 V, NP0, TP, 1005
2	2703-001180	C1052	INDUCTOR-SMD 15 nH, 5 %, 1 x 0.5 x 0.5 mm
2	2203-000995	C1053	C-CERAMIC, CHIP 0.047 nF, 5 %, 50 V, NP0, TP, 1005
2	2203-005065	C106	C-CERAMIC, CHIP 1000 nF, +80-20 %, 10 V, Y5 V, TP, 1608
2	2404-001281	C107	C-TA, CHIP 22 UF, 20 %, 6.3 V, GP, TP, 2012
2	2404-001281	C108	C-TA, CHIP 22 UF, 20 %, 6.3 V, GP, TP, 2012
2	2203-005065	C110	C-CERAMIC, CHIP 1000 nF, +80-20 %, 10 V, Y5 V, TP, 1608
2	2203-000254	C111	C-CERAMIC, CHIP 10 nF, 10 %, 16 V, X7R, TP, 1005, -
2	2203-005571	C112	C-CERAMIC, CHIP 10000 NF, +80-20 %, 6.3 V, Y5 V, TP, 2012
2	2203-005065	C113	C-CERAMIC, CHIP 1000 nF, +80-20 %, 10 V, Y5 V, TP, 1608
2	2203-005061	C115	C-CERAMIC, CHIP 100 nF, +80-20 %, 16 V, Y5 V, TP, 1005
2	2203-002494	C116	C-CERAMIC, CHIP 470 nF, 10 %, 16 V, X7R, TP, 2012
2	2404-001281	C117	C-TA, CHIP 22 UF, 20 %, 6.3 V, GP, TP, 2012
2	2203-000233	C118	C-CERAMIC, CHIP 0.1 nF, 5 %, 50 V, NP0, TP, 1005
2	2203-000254	C119	C-CERAMIC, CHIP 10 nF, 10 %, 16 V, X7R, TP, 1005, -
2	2203-005065	C120	C-CERAMIC, CHIP 1000 nF, +80-20 %, 10 V, Y5 V, TP, 1608
2	2203-005571	C126	C-CERAMIC, CHIP 10000 NF, +80-20 %, 6.3 V, Y5 V, TP, 2012
2	2203-005496	C127	C-CERAMIC, CHIP 220 nF, +80-20 %, 10 V, Y5 V, TP, 1005
2	2404-001105	C201	C-TA, CHIP 10 UF, 20 %, 6.3 V, GP, TP, 2012
2	2203-000233	C202	C-CERAMIC, CHIP 0.1 nF, 5 %, 50 V, NP0, TP, 1005

Level	SEC Code	Design LOC	DESCRIPTIONS
2	2404-001020	C203	C-TA, CHIP 10 uF, 20 %, 10 V, GP, TP, 3216, 3.2
2	2203-000812	C204	C-CERAMIC, CHIP 0.033 nF, 5 %, 50 V, NP0, TP, 1005
2	2203-000425	C205	C-CERAMIC, CHIP 0.018 nF, 5 %, 50 V, NP0, TP, 1005
2	2203-000995	C207	C-CERAMIC, CHIP 0.047 nF, 5 %, 50 V, NP0, TP, 1005
2	2203-005061	C208	C-CERAMIC, CHIP 100 nF, +80-20 %, 16 V, Y5 V, TP, 1005
2	2203-000995	C211	C-CERAMIC, CHIP 0.047 nF, 5 %, 50 V, NP0, TP, 1005
2	2203-000995	C212	C-CERAMIC, CHIP 0.047 nF, 5 %, 50 V, NP0, TP, 1005
2	2203-000995	C213	C-CERAMIC, CHIP 0.047 nF, 5 %, 50 V, NP0, TP, 1005
2	2203-000995	C214	C-CERAMIC, CHIP 0.047 nF, 5 %, 50 V, NP0, TP, 1005
2	2203-000995	C215	C-CERAMIC, CHIP 0.047 nF, 5 %, 50 V, NP0, TP, 1005
2	2203-000995	C216	C-CERAMIC, CHIP 0.047 nF, 5 %, 50 V, NP0, TP, 1005
2	2203-000995	C217	C-CERAMIC, CHIP 0.047 nF, 5 %, 50 V, NP0, TP, 1005
2	2203-000995	C218	C-CERAMIC, CHIP 0.047 nF, 5 %, 50 V, NP0, TP, 1005
2	2203-005061	C219	C-CERAMIC, CHIP 100 nF, +80-20 %, 16 V, Y5 V, TP, 1005
2	2203-000679	C301	C-CERAMIC, CHIP 0.027 nF, 5 %, 50 V, NP0, TP, 1005
2	2203-001441	C309	C-CERAMIC, CHIP 75 pF, 5 %, 50 V, X7R, TP, 1005, 1.0 mm
2	2203-005061	C321	C-CERAMIC, CHIP 100 nF, +80-20 %, 16 V, Y5 V, TP, 1005
2	2203-000628	C400	C-CERAMIC, CHIP 0.022 nF, 5 %, 50 V, NP0, TP, 1005
2	2203-005065	C404	C-CERAMIC, CHIP 1000 nF, +80-20 %, 10 V, Y5 V, TP, 1608
2	2203-005065	C407	C-CERAMIC, CHIP 1000 nF, +80-20 %, 10 V, Y5 V, TP, 1608
2	2404-001151	C410	C-TA, CHIP 33 UF, 20 %, 6.3 V, LZ, TP, 3216
2	2203-005061	C411	C-CERAMIC, CHIP 100 nF, +80-20 %, 16 V, Y5 V, TP, 1005
2	2203-000643	C421	C-CERAMIC, CHIP 0.024 nF, 5 %, 50 V, NP0, TP, 1005
2	2203-000679	C422	C-CERAMIC, CHIP 0.027 nF, 5 %, 50 V, NP0, TP, 1005
2	2203-001441	C425	C-CERAMIC, CHIP 75 pF, 5 %, 50 V, X7R, TP, 1005, 1.0 mm
2	2203-001630	C501	C-CERAMIC, CHIP 330 nF, +80-20 %, 16 V, Y5 V, TP, 1608
2	2203-001630	C502	C-CERAMIC, CHIP 330 nF, +80-20 %, 16 V, Y5 V, TP, 1608
2	2203-001630	C503	C-CERAMIC, CHIP 330 nF, +80-20 %, 16 V, Y5 V, TP, 1608
2	2203-000812	C504	C-CERAMIC, CHIP 0.033 nF, 5 %, 50 V, NP0, TP, 1005
2	2203-000812	C505	C-CERAMIC, CHIP 0.033 nF, 5 %, 50 V, NP0, TP, 1005
2	2203-005061	C506	C-CERAMIC, CHIP 100 nF, +80-20 %, 16 V, Y5 V, TP, 1005
2	2203-005061	C508	C-CERAMIC, CHIP 100 nF, +80-20 %, 16 V, Y5 V, TP, 1005
2	2203-000254	C510	C-CERAMIC, CHIP 10 nF, 10 %, 16 V, X7R, TP, 1005, -
2	2203-005571	C520	C-CERAMIC, CHIP 10000 NF, +80-20 %, 6.3 V, Y5 V, TP, 2012
2	2404-001101	C522	C-TA, CHIP 1 uF, 20 %, 16 V, GP, TP, 2012, -
2	2203-005061	C601	C-CERAMIC, CHIP 100 nF, +80-20 %, 16 V, Y5 V, TP, 1005
2	2203-000254	C602	C-CERAMIC, CHIP 10 nF, 10 %, 16 V, X7R, TP, 1005, -
2	2203-000254	C603	C-CERAMIC, CHIP 10 nF, 10 %, 16 V, X7R, TP, 1005, -
2	2203-000254	C604	C-CERAMIC, CHIP 10 nF, 10 %, 16 V, X7R, TP, 1005, -

Level	SEC Code	Design LOC	DESCRIPTIONS
2	2203-000254	C605	C-CERAMIC, CHIP 10 nF, 10 %, 16 V, X7R, TP, 1005, -
2	2203-000254	C606	C-CERAMIC, CHIP 10 nF, 10 %, 16 V, X7R, TP, 1005, -
2	2203-000254	C607	C-CERAMIC, CHIP 10 nF, 10 %, 16 V, X7R, TP, 1005, -
2	2203-000254	C608	C-CERAMIC, CHIP 10 nF, 10 %, 16 V, X7R, TP, 1005, -
2	2203-000254	C609	C-CERAMIC, CHIP 10 nF, 10 %, 16 V, X7R, TP, 1005, -
2	2203-005061	C610	C-CERAMIC, CHIP 100 nF, +80-20 %, 16 V, Y5 V, TP, 1005
2	2203-000628	C611	C-CERAMIC, CHIP 0.022 nF, 5 %, 50 V, NP0, TP, 1005
2	2203-000628	C612	C-CERAMIC, CHIP 0.022 nF, 5 %, 50 V, NP0, TP, 1005
2	2203-000254	C613	C-CERAMIC, CHIP 10 nF, 10 %, 16 V, X7R, TP, 1005, -
2	2203-000254	C614	C-CERAMIC, CHIP 10 nF, 10 %, 16 V, X7R, TP, 1005, -
2	2203-000254	C615	C-CERAMIC, CHIP 10 nF, 10 %, 16 V, X7R, TP, 1005, -
2	2203-005065	C622	C-CERAMIC, CHIP 1000 nF, +80-20 %, 10 V, Y5 V, TP, 1608
2	2203-000233	C701	C-CERAMIC, CHIP 0.1 nF, 5 %, 50 V, NP0, TP, 1005
2	2203-000233	C702	C-CERAMIC, CHIP 0.1 nF, 5 %, 50 V, NP0, TP, 1005
2	2203-000254	C703	C-CERAMIC, CHIP 10 nF, 10 %, 16 V, X7R, TP, 1005, -
2	2203-000254	C704	C-CERAMIC, CHIP 10 nF, 10 %, 16 V, X7R, TP, 1005, -
2	2203-000233	C705	C-CERAMIC, CHIP 0.1 nF, 5 %, 50 V, NP0, TP, 1005
2	2203-000233	C706	C-CERAMIC, CHIP 0.1 nF, 5 %, 50 V, NP0, TP, 1005
2	2203-000254	C709	C-CERAMIC, CHIP 10 nF, 10 %, 16 V, X7R, TP, 1005, -
2	2203-000254	C710	C-CERAMIC, CHIP 10 nF, 10 %, 16 V, X7R, TP, 1005, -
2	2203-000254	C711	C-CERAMIC, CHIP 10 nF, 10 %, 16 V, X7R, TP, 1005, -
2	2203-000254	C712	C-CERAMIC, CHIP 10 nF, 10 %, 16 V, X7R, TP, 1005, -
2	2203-005065	C717	C-CERAMIC, CHIP 1000 nF, +80-20 %, 10 V, Y5 V, TP, 1608
2	2203-000254	C718	C-CERAMIC, CHIP 10 nF, 10 %, 16 V, X7R, TP, 1005, -
2	2203-005061	C720	C-CERAMIC, CHIP 100 nF, +80-20 %, 16 V, Y5 V, TP, 1005
2	2203-005061	C721	C-CERAMIC, CHIP 100 nF, +80-20 %, 16 V, Y5 V, TP, 1005
2	2203-005061	C722	C-CERAMIC, CHIP 100 nF, +80-20 %, 16 V, Y5 V, TP, 1005
2	2203-005065	C723	C-CERAMIC, CHIP 1000 nF, +80-20 %, 10 V, Y5 V, TP, 1608
2	2203-005065	C724	C-CERAMIC, CHIP 1000 nF, +80-20 %, 10 V, Y5 V, TP, 1608
2	2203-005065	C725	C-CERAMIC, CHIP 1000 nF, +80-20 %, 10 V, Y5 V, TP, 1608
2	2203-000254	C732	C-CERAMIC, CHIP 10 nF, 10 %, 16 V, X7R, TP, 1005, -
2	2203-000254	C801	C-CERAMIC, CHIP 10 nF, 10 %, 16 V, X7R, TP, 1005, -
2	2203-000438	C802	C-CERAMIC, CHIP 1 nF, 10 %, 50 V, X7R, TP, 1005, -
2	2203-000995	C803	C-CERAMIC, CHIP 0.047 nF, 5 %, 50 V, NP0, TP, 1005
2	2203-000812	C804	C-CERAMIC, CHIP 0.033 nF, 5 %, 50 V, NP0, TP, 1005
2	2203-000233	C805	C-CERAMIC, CHIP 0.1 nF, 5 %, 50 V, NP0, TP, 1005
2	2203-000254	C806	C-CERAMIC, CHIP 10 nF, 10 %, 16 V, X7R, TP, 1005, -
2	2203-000254	C807	C-CERAMIC, CHIP 10 nF, 10 %, 16 V, X7R, TP, 1005, -
2	2203-005552	C808	C-CERAMIC, CHIP 0.0022 nF, 0.1 pF, 50 V, NP0, TP, 1005

Level	SEC Code	Design LOC	DESCRIPTIONS
2	2203-000233	C809	C-CERAMIC, CHIP 0.1 nF, 5 %, 50 V, NP0, TP, 1005
2	2203-000995	C810	C-CERAMIC, CHIP 0.047 nF, 5 %, 50 V, NP0, TP, 1005
2	2203-000995	C811	C-CERAMIC, CHIP 0.047 nF, 5 %, 50 V, NP0, TP, 1005
2	2203-000751	C812	C-CERAMIC, CHIP 330 nF, +80-20 %, 16 V, Y5 V, TP, 2012,
2	2203-000438	C818	C-CERAMIC, CHIP 1 nF, 10 %, 50 V, X7R, TP, 1005, -
2	2203-000870	C901	C-CERAMIC, CHIP 0.003 nF, 0.25 pF, 50 V, NP0, TP, 1005
2	2203-000438	C903	C-CERAMIC, CHIP 1 nF, 10 %, 50 V, X7R, TP, 1005, -
2	2203-001201	C905	C-CERAMIC, CHIP 0.007 nF, 0.5 pF, 50 V, NP0, TP, 1005
2	2203-000438	C907	C-CERAMIC, CHIP 1 nF, 10 %, 50 V, X7R, TP, 1005, -
2	2203-000438	C908	C-CERAMIC, CHIP 1 nF, 10 %, 50 V, X7R, TP, 1005, -
2	2404-001088	C913	C-TA, CHIP 2.2 uF, 20 %, 6.3 V, GP, TP, 2012, -
2	2203-000628	C914	C-CERAMIC, CHIP 0.022 nF, 5 %, 50 V, NP0, TP, 1005
2	2404-001151	C915	C-TA, CHIP 33 UF, 20 %, 6.3 V, LZ, TP, 3216
2	2203-000254	C917	C-CERAMIC, CHIP 10 nF, 10 %, 16 V, X7R, TP, 1005, -
2	2203-000679	C918	C-CERAMIC, CHIP 0.027 nF, 5 %, 50 V, NP0, TP, 1005
2	2203-000438	C919	C-CERAMIC, CHIP 1 nF, 10 %, 50 V, X7R, TP, 1005, -
2	2203-000812	C922	C-CERAMIC, CHIP 0.033 nF, 5 %, 50 V, NP0, TP, 1005
2	2203-000438	C923	C-CERAMIC, CHIP 1 nF, 10 %, 50 V, X7R, TP, 1005, -
2	2203-002687	C924	C-CERAMIC, CHIP 1.2 nF, 10 %, 50 V, X7R, TP, 1005
2	2203-000359	C925	C-CERAMIC, CHIP 0.15 nF, 5 %, 50 V, NP0, TP, 1005
2	2404-001105	C926	C-TA, CHIP 10 UF, 20 %, 6.3 V, GP, TP, 2012
2	2203-000679	C928	C-CERAMIC, CHIP 0.027 nF, 5 %, 50 V, NP0, TP, 1005
2	2203-000438	C931	C-CERAMIC, CHIP 1 nF, 10 %, 50 V, X7R, TP, 1005, -
2	2203-000438	C932	C-CERAMIC, CHIP 1 nF, 10 %, 50 V, X7R, TP, 1005, -
2	2203-005061	C934	C-CERAMIC, CHIP 100 nF, +80-20 %, 16 V, Y5 V, TP, 1005
2	2203-000278	C938	C-CERAMIC, CHIP 0.01 nF, 0.5 pF, 50 V, NP0, TP, 1005
2	2203-000438	C939	C-CERAMIC, CHIP 1 nF, 10 %, 50 V, X7R, TP, 1005, -
2	2301-001214	C940	C-FILM, CHIP 4.7 nF, 5 %, 16 V, TP, 2012, -
2	2301-001387	C941	C-FILM, CHIP 0.82 nF, 5 %, 50 V, TP, 2012, -
2	2203-000995	C942	C-CERAMIC, CHIP 0.047 nF, 5 %, 50 V, NP0, TP, 1005
2	2203-002968	C943	C-CERAMIC, CHIP 0.051 nF, 5 %, 50 V, NP0, TP, 1005
2	2203-000278	C944	C-CERAMIC, CHIP 0.01 nF, 0.5 pF, 50 V, NP0, TP, 1005
2	2203-000438	C951	C-CERAMIC, CHIP 1 nF, 10 %, 50 V, X7R, TP, 1005, -
2	2203-000254	C954	C-CERAMIC, CHIP 10 nF, 10 %, 16 V, X7R, TP, 1005, -
2	2203-005061	C957	C-CERAMIC, CHIP 100 nF, +80-20 %, 16 V, Y5 V, TP, 1005
2	2203-000696	C958	C-CERAMIC, CHIP 0.002 nF, 0.25 pF, 50 V, NP0, TP, 1005
2	2203-005061	C959	C-CERAMIC, CHIP 100 nF, +80-20 %, 16 V, Y5 V, TP, 1005
2	2203-005056	C960	C-CERAMIC, CHIP 0.0068 nF, 0.25 pF, 50 V, NP0, TP, 1005
2	2203-005056	C961	C-CERAMIC, CHIP 0.0068 nF, 0.25 pF, 50 V, NP0, TP, 1005

Level	SEC Code	Design LOC	DESCRIPTIONS
2	2203-000812	C962	C-CERAMIC, CHIP 0.033 nF, 5 %, 50 V, NP0, TP, 1005
2	2404-001088	C963	C-TA, CHIP 2.2 uF, 20 %, 6.3 V, GP, TP, 2012, -
2	2203-000812	C964	C-CERAMIC, CHIP 0.033 nF, 5 %, 50 V, NP0, TP, 1005
2	2203-000254	C965	C-CERAMIC, CHIP 10 nF, 10 %, 16 V, X7R, TP, 1005, -
2	2404-001105	C966	C-TA, CHIP 10 UF, 20 %, 6.3 V, GP, TP, 2012
2	2203-000812	C967	C-CERAMIC, CHIP 0.033 nF, 5 %, 50 V, NP0, TP, 1005
2	2203-000812	C968	C-CERAMIC, CHIP 0.033 nF, 5 %, 50 V, NP0, TP, 1005
2	2203-000812	C969	C-CERAMIC, CHIP 0.033 nF, 5 %, 50 V, NP0, TP, 1005
2	2203-000812	C970	C-CERAMIC, CHIP 0.033 nF, 5 %, 50 V, NP0, TP, 1005
2	2301-001213	C972	C-FILM, CHIP 6.8 nF, 5 %, 16 V, TP, 2012, -
2	2301-001419	C973	C-FILM, CHIP 8.2 nF, 5 %, 16 V, TP, 2012, -
2	2301-001530	C974	C-FILM, CHIP 0.27 NF, 5 %, 50 V, TP, 2012, -
2	2301-001233	C975	C-FILM, CHIP 2.2 nF, 5 %, 50 V, TP, 2012, -
2	2203-000679	C976	C-CERAMIC, CHIP 0.027 nF, 5 %, 50 V, NP0, TP, 1005
2	2203-002525	C977	C-CERAMIC, CHIP 0.56 nF, 10 %, 50 V, X7R, TP, 1005
2	2203-000812	C978	C-CERAMIC, CHIP 0.033 nF, 5 %, 50 V, NP0, TP, 1005
2	2203-000438	C979	C-CERAMIC, CHIP 1 nF, 10 %, 50 V, X7R, TP, 1005, -
2	2203-000254	C980	C-CERAMIC, CHIP 10 nF, 10 %, 16 V, X7R, TP, 1005, -
2	2203-000438	C983	C-CERAMIC, CHIP 1 nF, 10 %, 50 V, X7R, TP, 1005, -
2	2203-000438	C984	C-CERAMIC, CHIP 1 nF, 10 %, 50 V, X7R, TP, 1005, -
2	2203-000438	C985	C-CERAMIC, CHIP 1 nF, 10 %, 50 V, X7R, TP, 1005, -
2	2203-000254	C988	C-CERAMIC, CHIP 10 nF, 10 %, 16 V, X7R, TP, 1005, -
2	3705-001239	CN1001	CONNECTOR-COAXIAL -, JAC K, 50 Mohm, 50 ohm, 0.3dB
2	3711-004623	CN202	CONNECTOR-HEADER BOX , 20P, 2R, 0.5 mm, SMD-S, AUF
2	3711-004623	CN203	CONNECTOR-HEADER BOX , 20P, 2R, 0.5 mm, SMD-S, AUF
2	3710-001611	CN301	CONNECTOR-SOCKET 18P, 1R, 0.5 mm, SMD-A, AUF
2	3722-001715	CN401	JACK-PHONE 6P, 2.3PI, AG, BLK, -
2	3711-004621	CN601	CONNECTOR-HEADER BOX , 14P, 2R, 0.5 mm, SMD-S, AUF
2	3709-001187	CN801	CONNECTOR-CARD EDGE 6P, 2.54 MM, SMD-A, -
2	0401-001033	D101	DIODE-SWITCHING MCL4154, 25 V, 200mA, M-MELF, TP
2	1405-001082	D202	VARISTOR 5.6 V, 20A, 1 x 0.5 x 0.6 mm, TP
2	1405-001082	D203	VARISTOR 5.6 V, 20A, 1 x 0.5 x 0.6 mm, TP
2	1405-001082	D204	VARISTOR 5.6 V, 20A, 1 x 0.5 x 0.6 mm, TP
2	1405-001018	D302	VARISTOR 14 V, -, 1.6 x 0.8 mm, TP
2	1405-001018	D303	VARISTOR 14 V, -, 1.6 x 0.8 mm, TP
2	0407-000115	D501	DIODE-ARRAY DAN202U, 80 V, 100mA, CA2-3, SC-70,
2	0407-001002	D502	DIODE-ARRAY DAN222, 80 V, 300mA, CA2-3, EM3, TP
2	4709-001214	F1001	COUPLER-DIRECTION 880-915MHz, 19.5+-1dB, 13dB, 2.0 X 1.25 X 0.7 mm, TP
2	4709-001213	F1002	COUPLER-DIRECTION 1710-1785MHz, 14+-1dB, 12dB, 2.0 X 1.25 X 0.7 mm, TP

Level	SEC Code	Design LOC	DESCRIPTIONS
2	2904-001325	F1003	FILTER-SAW 942.5MHZ, 50MHZ, 1.7DB(G), 2.0DB(P), TP, 2.8DB(G), 3.1DB(P), -
2	2904-001226	F901	FILTER-SAW 942.5MHZ, 35MHZ, 925-960MHZ/2dB, TP, 925-960MHZ/3.8dB, -
2	2904-001320	F902	FILTER-SAW 225MHZ, 60MHZ, -, TP, -, -
2	2904-001228	F903	FILTER-SAW 1.8425GHz, -, 1805-1880MHZ/1dB, TP, 1805-1880MHZ/3.5dB, -
2	4709-001217	F904	FREQ-DISTRIBUTER 880-960MHZ, 1710-1880MHZ, 0.7dB, 4 W, -30to+85C, 50 ohm
2	2703-001190	L1001	INDUCTOR-SMD 15 nH, 5 %, 1.6 x 0.8 x 0.8 mm
2	2703-001132	L1002	INDUCTOR-SMD 4.7 nH, 5 %, 1.6 x 0.8 x 0.8 mm
2	2703-001288	L1004	INDUCTOR-SMD 2.7 nH, 0.5 nH, 1.6 x 0.8 X 0.8 mm
2	2703-001040	L1005	INDUCTOR-SMD 10 nH, 5 %, 1.6 x 0.8 x 0.8 mm
2	2703-001207	L1006	INDUCTOR-SMD 6.8 nH, 5 %, 1.6 x 0.8 X 0.8 mm
2	2703-001207	L1007	INDUCTOR-SMD 6.8 nH, 5 %, 1.6 x 0.8 X 0.8 mm
2	2703-001206	L1008	INDUCTOR-SMD 4.7 nH, 0.3 nH, 1.6 x 0.8 X 0.8 mm
2	2703-001258	L1009	INDUCTOR-SMD 3.3 nH, 0.3 nH, 1.6 x 0.8 x 0.8 mm
2	3301-001105	L101	CORE-FERRITE AB, 1.6 x 0.8 x 0.8 mm, -, -
2	2703-001514	L902	INDUCTOR-SMD 68 nH, 5 %, 1.8 x 1.12 x 1.02 mm
2	2703-001514	L903	INDUCTOR-SMD 68 nH, 5 %, 1.8 x 1.12 x 1.02 mm
2	2703-001926	L904	INDUCTOR-SMD 27 nH, 2 %, 1.6 x 0.8 x 0.8 mm
2	2703-001747	L905	INDUCTOR-SMD 4.7 nH, 0.3 nH, 1.0 x 0.5 x 0.5 mm
2	2703-001514	L907	INDUCTOR-SMD 68 nH, 5 %, 1.8 x 1.12 x 1.02 mm
2	2703-001748	L909	INDUCTOR-SMD 5.6 nH, 0.3 nH, 1.0 x 0.5 x 0.5 mm
2	2703-001685	L910	INDUCTOR-SMD 82 nH, 5 %, 1.7 x 1.14 x 1.02 mm
2	2703-001613	L911	INDUCTOR-SMD 18 nH, 10 %, 1 x 0.5 x 0.5 mm
2	2703-001734	L912	INDUCTOR-SMD 6.8 nH, 5 %, 1 x 0.5 x 0.5 mm
2	2703-001132	L914	INDUCTOR-SMD 4.7 nH, 5 %, 1.6 x 0.8 x 0.8 mm
2	2007-007771	L915	R-CHIP 0 OHM, 5 %, 1/16 W, DA, TP, 1005
2	2703-001422	L916	INDUCTOR-SMD 22 nH, 5 %, 1.6 x 0.8 x 0.8 mm
2	2703-001422	L918	INDUCTOR-SMD 22 nH, 5 %, 1.6 x 0.8 x 0.8 mm
2	2703-001943	L933	INDUCTOR-SMD 10 nH, 5 %, 1.0 x 0.5 x 0.5 mm
2	4302-001119	M101	BATTERY-LI(2ND) 3 V, 0.1MAH, -, -, 3.1 V, -
2	2801-004116	OSC601	CRYSTAL-UNIT 0.032768MHZ, 20PPM, 28-AB K, 12.5FF, 65 kohm, TP
2	2809-001255	OSC801	OSCILLATOR-VCTCXO 13MHZ, 5PPM, 10 kohm//10 PF, TP, 3 V, 2MA
2	2806-001233	OSC901	OSCILLATOR-VCO 1167MHz/1615MHz, -, 0+-3dBm, TP, 2.85 V, -
2	2806-001232	OSC902	OSCILLATOR-VCO 1080MHz, -, -6to0dBm, TP, 2.85 V, 6.5mA
2	2806-001231	OSC903	OSCILLATOR-VCO 897.5MHz/1747.5MHz, -, -, TP, 2.85 V, 20mA
2	0504-001012	Q1001	TR-DIGITALDTC114YE, NPN, 150MW, 10K/47 K, EMT3, TP
2	0504-001012	Q1002	TR-DIGITALDTC114YE, NPN, 150MW, 10K/47 K, EMT3, TP
2	0504-001012	Q1003	TR-DIGITALDTC114YE, NPN, 150MW, 10K/47 K, EMT3, TP
2	0504-000168	Q101	TR-DIGITALRN1104, NPN, 100MW, 47K/47 K, SSM, TP
2	0504-000168	Q102	TR-DIGITALRN1104, NPN, 100MW, 47K/47 K, SSM, TP

Level	SEC Code	Design LOC	DESCRIPTIONS
2	0504-000168	Q114	TR-DIGITAL RN1104, NPN, 100MW, 47K/47 K, SSM, TP
2	0501-002346	Q201	TR-SMALL SIGNAL 2SB1427, PNP, 500MW, SOT-89, TP, 390-820
2	0504-000168	Q204	TR-DIGITAL RN1104, NPN, 100MW, 47K/47 K, SSM, TP
2	0504-000168	Q205	TR-DIGITAL RN1104, NPN, 100MW, 47K/47 K, SSM, TP
2	0501-002011	Q301	TR-SMALL SIGNAL 2SD2114 K, NPN, 200MW, SOT-23, TP, 8
2	0501-000162	Q501	TR-SMALL SIGNAL 2SA1576, PNP, 200MW, SOT-323, TP, 180-390
2	0501-002011	Q502	TR-SMALL SIGNAL 2SD2114 K, NPN, 200MW, SOT-23, TP, 8
2	0504-000167	Q503	TR-DIGITAL RN1102, NPN, 100MW, 10K/10 K, SSM, TP
2	0504-000167	Q601	TR-DIGITAL RN1102, NPN, 100MW, 10K/10 K, SSM, TP
2	0504-000167	Q602	TR-DIGITAL RN1102, NPN, 100MW, 10K/10 K, SSM, TP
2	0504-000167	Q603	TR-DIGITAL RN1102, NPN, 100MW, 10K/10 K, SSM, TP
2	2007-000070	R1000	R-CHIP 0 ohm, 5 %, 1/16 W, DA, TP, 1608
2	2007-001288	R1001	R-CHIP 18 ohm, 5 %, 1/16 W, DA, TP, 1005
2	2007-007008	R1002	R-CHIP 300 OHM, 5 %, 1/16 W, DA, TP, 1005
2	2007-007008	R1003	R-CHIP 300 OHM, 5 %, 1/16 W, DA, TP, 1005
2	2007-000139	R1004	R-CHIP 220 ohm, 5 %, 1/16 W, DA, TP, 1005
2	2007-007132	R1005	R-CHIP 15 kohm, 1 %, 1/16 W, DA, TP, 1005
2	2007-007142	R1006	R-CHIP 10 kohm, 1 %, 1/16 W, DA, TP, 1005
2	2007-007771	R1007	R-CHIP 0 OHM, 5 %, 1/16 W, DA, TP, 1005
2	2007-001301	R1008	R-CHIP 68 ohm, 5 %, 1/16 W, DA, TP, 1005
2	2007-001301	R1009	R-CHIP 68 ohm, 5 %, 1/16 W, DA, TP, 1005
2	2007-000157	R101	R-CHIP 47 kohm, 5 %, 1/16 W, DA, TP, 1005
2	2007-007311	R1010	R-CHIP 22 kohm, 1 %, 1/16 W, DA, TP, 1005
2	2007-007008	R1011	R-CHIP 300 OHM, 5 %, 1/16 W, DA, TP, 1005
2	2007-007139	R1012	R-CHIP 47 kohm, 1 %, 1/16 W, DA, TP, 1005
2	2007-001301	R1013	R-CHIP 68 ohm, 5 %, 1/16 W, DA, TP, 1005
2	2007-001301	R1014	R-CHIP 68 ohm, 5 %, 1/16 W, DA, TP, 1005
2	2007-007132	R1015	R-CHIP 15 kohm, 1 %, 1/16 W, DA, TP, 1005
2	2007-001288	R1016	R-CHIP 18 ohm, 5 %, 1/16 W, DA, TP, 1005
2	2007-007008	R1017	R-CHIP 300 OHM, 5 %, 1/16 W, DA, TP, 1005
2	2007-007008	R1018	R-CHIP 300 OHM, 5 %, 1/16 W, DA, TP, 1005
2	2007-000148	R102	R-CHIP 10 kohm, 5 %, 1/16 W, DA, TP, 1005
2	2007-000148	R1020	R-CHIP 10 kohm, 5 %, 1/16 W, DA, TP, 1005
2	2007-000148	R1021	R-CHIP 10 kohm, 5 %, 1/16 W, DA, TP, 1005
2	2007-000148	R1022	R-CHIP 10 kohm, 5 %, 1/16 W, DA, TP, 1005
2	2007-000140	R1023	R-CHIP 1 kohm, 5 %, 1/16 W, DA, TP, 1005
2	2007-000148	R1024	R-CHIP 10 kohm, 5 %, 1/16 W, DA, TP, 1005
2	2007-000172	R1025	R-CHIP 10 ohm, 5 %, 1/16 W, DA, TP, 1005
2	2007-000172	R1026	R-CHIP 10 ohm, 5 %, 1/16 W, DA, TP, 1005

Level	SEC Code	Design LOC	DESCRIPTIONS
2	2007-007771	R104	R-CHIP 0 OHM, 5 %, 1/16 W, DA, TP, 1005
2	2007-000170	R105	R-CHIP 1 Mohm, 5 %, 1/16 W, DA, TP, 1005
2	2007-000172	R107	R-CHIP 10 ohm, 5 %, 1/16 W, DA, TP, 1005
2	2007-000157	R108	R-CHIP 47 kohm, 5 %, 1/16 W, DA, TP, 1005
2	2007-000157	R109	R-CHIP 47 kohm, 5 %, 1/16 W, DA, TP, 1005
2	2007-000148	R110	R-CHIP 10 kohm, 5 %, 1/16 W, DA, TP, 1005
2	2007-000148	R115	R-CHIP 10 kohm, 5 %, 1/16 W, DA, TP, 1005
2	2007-000162	R116	R-CHIP 100 kohm, 5 %, 1/16 W, DA, TP, 1005
2	2007-001319	R117	R-CHIP 1.2 kohm, 5 %, 1/16 W, DA, TP, 1005
2	2007-000162	R119	R-CHIP 100 kohm, 5 %, 1/16 W, DA, TP, 1005
2	2007-007771	R18	R-CHIP 0 OHM, 5 %, 1/16 W, DA, TP, 1005
2	2007-007308	R201	R-CHIP 33 kohm, 1 %, 1/16 W, DA, TP, 1005
2	2007-007308	R202	R-CHIP 33 kohm, 1 %, 1/16 W, DA, TP, 1005
2	2007-001323	R203	R-CHIP 3 kohm, 5 %, 1/16 W, DA, TP, 1005
2	2007-007139	R204	R-CHIP 47 kohm, 1 %, 1/16 W, DA, TP, 1005
2	2007-007771	R206	R-CHIP 0 OHM, 5 %, 1/16 W, DA, TP, 1005
2	2007-000162	R210	R-CHIP 100 kohm, 5 %, 1/16 W, DA, TP, 1005
2	2007-000148	R211	R-CHIP 10 kohm, 5 %, 1/16 W, DA, TP, 1005
2	2007-000157	R212	R-CHIP 47 kohm, 5 %, 1/16 W, DA, TP, 1005
2	2007-000157	R213	R-CHIP 47 kohm, 5 %, 1/16 W, DA, TP, 1005
2	2007-000157	R214	R-CHIP 47 kohm, 5 %, 1/16 W, DA, TP, 1005
2	2007-000157	R215	R-CHIP 47 kohm, 5 %, 1/16 W, DA, TP, 1005
2	2007-000157	R216	R-CHIP 47 kohm, 5 %, 1/16 W, DA, TP, 1005
2	2007-000162	R217	R-CHIP 100 kohm, 5 %, 1/16 W, DA, TP, 1005
2	2007-000162	R218	R-CHIP 100 kohm, 5 %, 1/16 W, DA, TP, 1005
2	2007-000162	R222	R-CHIP 100 kohm, 5 %, 1/16 W, DA, TP, 1005
2	2007-000138	R223	R-CHIP 100 ohm, 5 %, 1/16 W, DA, TP, 1005
2	2007-000138	R224	R-CHIP 100 ohm, 5 %, 1/16 W, DA, TP, 1005
2	2007-000138	R225	R-CHIP 100 ohm, 5 %, 1/16 W, DA, TP, 1005
2	2007-000138	R226	R-CHIP 100 ohm, 5 %, 1/16 W, DA, TP, 1005
2	2007-000138	R227	R-CHIP 100 ohm, 5 %, 1/16 W, DA, TP, 1005
2	2007-000138	R228	R-CHIP 100 ohm, 5 %, 1/16 W, DA, TP, 1005
2	2007-000138	R229	R-CHIP 100 ohm, 5 %, 1/16 W, DA, TP, 1005
2	2007-000138	R230	R-CHIP 100 ohm, 5 %, 1/16 W, DA, TP, 1005
2	2007-000138	R231	R-CHIP 100 ohm, 5 %, 1/16 W, DA, TP, 1005
2	2007-007771	R232	R-CHIP 0 OHM, 5 %, 1/16 W, DA, TP, 1005
2	2007-000140	R300	R-CHIP 1 kohm, 5 %, 1/16 W, DA, TP, 1005
2	2007-007771	R302	R-CHIP 0 OHM, 5 %, 1/16 W, DA, TP, 1005
2	2007-000140	R304	R-CHIP 1 kohm, 5 %, 1/16 W, DA, TP, 1005

Level	SEC Code	Design LOC	DESCRIPTIONS
2	2007-000157	R305	R-CHIP 47 kohm, 5 %, 1/16 W, DA, TP, 1005
2	2007-000140	R306	R-CHIP 1 kohm, 5 %, 1/16 W, DA, TP, 1005
2	2007-000140	R307	R-CHIP 1 kohm, 5 %, 1/16 W, DA, TP, 1005
2	2007-007771	R308	R-CHIP 0 OHM, 5 %, 1/16 W, DA, TP, 1005
2	2007-000140	R309	R-CHIP 1 kohm, 5 %, 1/16 W, DA, TP, 1005
2	2007-000166	R310	R-CHIP 300 kohm, 5 %, 1/16 W, DA, TP, 1005
2	2007-000157	R311	R-CHIP 47 kohm, 5 %, 1/16 W, DA, TP, 1005
2	2007-000140	R314	R-CHIP 1 kohm, 5 %, 1/16 W, DA, TP, 1005
2	2007-000140	R315	R-CHIP 1 kohm, 5 %, 1/16 W, DA, TP, 1005
2	2007-007771	R321	R-CHIP 0 OHM, 5 %, 1/16 W, DA, TP, 1005
2	2007-000140	R322	R-CHIP 1 kohm, 5 %, 1/16 W, DA, TP, 1005
2	2007-000143	R323	R-CHIP 4.7 kohm, 5 %, 1/16 W, DA, TP, 1005
2	2007-000839	R324	R-CHIP 39 ohm, 5 %, 1/16 W, DA, TP, 1608
2	2007-007771	R325	R-CHIP 0 OHM, 5 %, 1/16 W, DA, TP, 1005
2	2007-007771	R327	R-CHIP 0 OHM, 5 %, 1/16 W, DA, TP, 1005
2	2007-007771	R329	R-CHIP 0 OHM, 5 %, 1/16 W, DA, TP, 1005
2	2007-000618	R330	R-CHIP 24 ohm, 5 %, 1/16 W, DA, TP, 1608
2	2007-000162	R401	R-CHIP 100 kohm, 5 %, 1/16 W, DA, TP, 1005
2	2007-007771	R402	R-CHIP 0 OHM, 5 %, 1/16 W, DA, TP, 1005
2	2007-000148	R403	R-CHIP 10 kohm, 5 %, 1/16 W, DA, TP, 1005
2	2007-000148	R404	R-CHIP 10 kohm, 5 %, 1/16 W, DA, TP, 1005
2	2007-007021	R405	R-CHIP 75 kohm, 5 %, 1/16 W, DA, TP, 1005
2	2007-000566	R406	R-CHIP 220 kohm, 5 %, 1/16 W, DA, TP, 1005
2	2007-000242	R407	R-CHIP 1.5 kohm, 5 %, 1/16 W, DA, TP, 1005
2	2007-000159	R408	R-CHIP 56 kohm, 5 %, 1/16 W, DA, TP, 1005
2	2007-000162	R426	R-CHIP 100 kohm, 5 %, 1/16 W, DA, TP, 1005
2	2007-000141	R427	R-CHIP 2.2 kohm, 5 %, 1/16 W, DA, TP, 1005
2	2007-000148	R502	R-CHIP 10 kohm, 5 %, 1/16 W, DA, TP, 1005
2	2007-000142	R503	R-CHIP 2.7 kohm, 5 %, 1/16 W, DA, TP, 1005
2	2007-000162	R504	R-CHIP 100 kohm, 5 %, 1/16 W, DA, TP, 1005
2	2007-000172	R507	R-CHIP 10 ohm, 5 %, 1/16 W, DA, TP, 1005
2	2007-000143	R508	R-CHIP 4.7 kohm, 5 %, 1/16 W, DA, TP, 1005
2	2007-000143	R509	R-CHIP 4.7 kohm, 5 %, 1/16 W, DA, TP, 1005
2	2007-007771	R510	R-CHIP 0 OHM, 5 %, 1/16 W, DA, TP, 1005
2	2007-000157	R511	R-CHIP 47 kohm, 5 %, 1/16 W, DA, TP, 1005
2	2007-000157	R512	R-CHIP 47 kohm, 5 %, 1/16 W, DA, TP, 1005
2	2007-000148	R514	R-CHIP 10 kohm, 5 %, 1/16 W, DA, TP, 1005
2	2007-007771	R517	R-CHIP 0 OHM, 5 %, 1/16 W, DA, TP, 1005
2	2007-000157	R520	R-CHIP 47 kohm, 5 %, 1/16 W, DA, TP, 1005
2	2007-000148	R601	R-CHIP 10 kohm, 5 %, 1/16 W, DA, TP, 1005

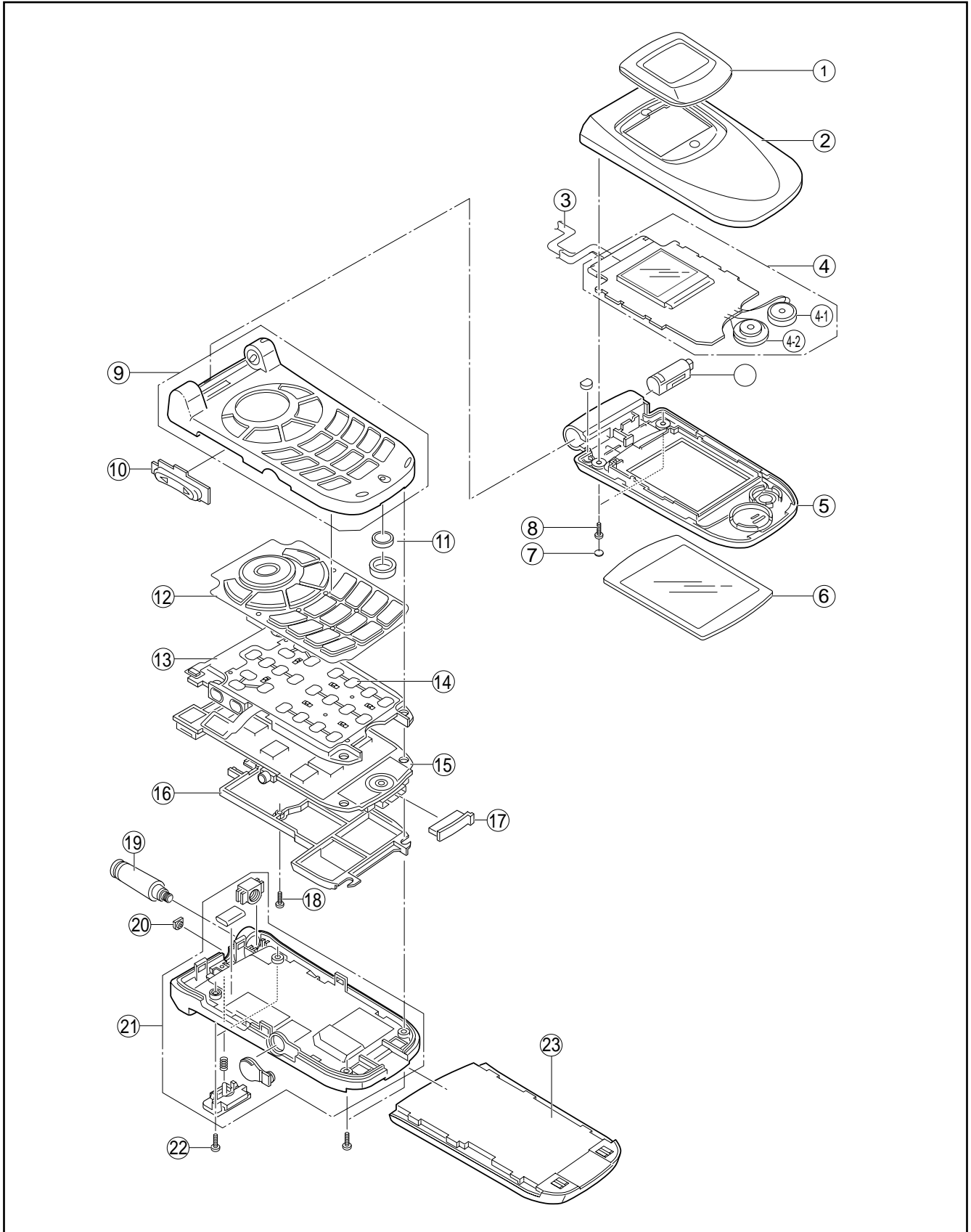
Level	SEC Code	Design LOC	DESCRIPTIONS
2	2007-000157	R603	R-CHIP 47 kohm, 5 %, 1/16 W, DA, TP, 1005
2	2007-007771	R604	R-CHIP 0 OHM, 5 %, 1/16 W, DA, TP, 1005
2	2007-001306	R605	R-CHIP 150 ohm, 5 %, 1/16 W, DA, TP, 1005
2	2007-000170	R606	R-CHIP 1 Mohm, 5 %, 1/16 W, DA, TP, 1005
2	2007-007142	R607	R-CHIP 10 kohm, 1 %, 1/16 W, DA, TP, 1005
2	2007-000148	R608	R-CHIP 10 kohm, 5 %, 1/16 W, DA, TP, 1005
2	2007-000157	R610	R-CHIP 47 kohm, 5 %, 1/16 W, DA, TP, 1005
2	2007-000172	R613	R-CHIP 10 ohm, 5 %, 1/16 W, DA, TP, 1005
2	2007-007771	R615	R-CHIP 0 OHM, 5 %, 1/16 W, DA, TP, 1005
2	2007-007771	R616	R-CHIP 0 OHM, 5 %, 1/16 W, DA, TP, 1005
2	2007-007771	R617	R-CHIP 0 OHM, 5 %, 1/16 W, DA, TP, 1005
2	2007-000172	R618	R-CHIP 10 ohm, 5 %, 1/16 W, DA, TP, 1005
2	2007-001311	R619	R-CHIP 270 ohm, 5 %, 1/16 W, DA, TP, 1005
2	2007-007317	R701	R-CHIP 2.2 kohm, 1 %, 1/16 W, DA, TP, 1005
2	2007-007317	R702	R-CHIP 2.2 kohm, 1 %, 1/16 W, DA, TP, 1005
2	2007-000172	R703	R-CHIP 10 ohm, 5 %, 1/16 W, DA, TP, 1005
2	2007-007317	R711	R-CHIP 2.2 kohm, 1 %, 1/16 W, DA, TP, 1005
2	2007-007317	R712	R-CHIP 2.2 kohm, 1 %, 1/16 W, DA, TP, 1005
2	2007-000148	R714	R-CHIP 10 kohm, 5 %, 1/16 W, DA, TP, 1005
2	2007-007698	R728	R-CHIP 5.1 kohm, 1 %, 1/16 W, DA, TP, 1005
2	2007-007698	R729	R-CHIP 5.1 kohm, 1 %, 1/16 W, DA, TP, 1005
2	2007-007698	R730	R-CHIP 5.1 kohm, 1 %, 1/16 W, DA, TP, 1005
2	2007-007698	R731	R-CHIP 5.1 kohm, 1 %, 1/16 W, DA, TP, 1005
2	2007-007698	R732	R-CHIP 5.1 kohm, 1 %, 1/16 W, DA, TP, 1005
2	2007-007698	R733	R-CHIP 5.1 kohm, 1 %, 1/16 W, DA, TP, 1005
2	2007-007771	R734	R-CHIP 0 OHM, 5 %, 1/16 W, DA, TP, 1005
2	2007-000172	R801	R-CHIP 10 ohm, 5 %, 1/16 W, DA, TP, 1005
2	2007-000172	R802	R-CHIP 10 ohm, 5 %, 1/16 W, DA, TP, 1005
2	2007-000161	R803	R-CHIP 82 kohm, 5 %, 1/16 W, DA, TP, 1005
2	2007-000151	R804	R-CHIP 15 kohm, 5 %, 1/16 W, DA, TP, 1005
2	2007-000174	R805	R-CHIP 47 ohm, 5 %, 1/16 W, DA, TP, 1005
2	2007-007771	R806	R-CHIP 0 OHM, 5 %, 1/16 W, DA, TP, 1005
2	2007-000159	R807	R-CHIP 56 kohm, 5 %, 1/16 W, DA, TP, 1005
2	2007-000170	R808	R-CHIP 1 Mohm, 5 %, 1/16 W, DA, TP, 1005
2	2007-007771	R809	R-CHIP 0 OHM, 5 %, 1/16 W, DA, TP, 1005
2	2007-000148	R811	R-CHIP 10 kohm, 5 %, 1/16 W, DA, TP, 1005
2	2007-000138	R812	R-CHIP 100 ohm, 5 %, 1/16 W, DA, TP, 1005
2	2007-000138	R813	R-CHIP 100 ohm, 5 %, 1/16 W, DA, TP, 1005
2	2007-000138	R814	R-CHIP 100 ohm, 5 %, 1/16 W, DA, TP, 1005
2	2007-007318	R901	R-CHIP 1 kohm, 1 %, 1/16 W, DA, TP, 1005

Level	SEC Code	Design LOC	DESCRIPTIONS
2	2007-000172	R902	R-CHIP 10 ohm, 5 %, 1/16 W, DA, TP, 1005
2	2007-000172	R903	R-CHIP 10 ohm, 5 %, 1/16 W, DA, TP, 1005
2	2007-001284	R905	R-CHIP 4.7 ohm, 5 %, 1/16 W, DA, TP, 1005
2	2007-000172	R906	R-CHIP 10 ohm, 5 %, 1/16 W, DA, TP, 1005
2	2007-007771	R907	R-CHIP 0 OHM, 5 %, 1/16 W, DA, TP, 1005
2	2007-000172	R908	R-CHIP 10 ohm, 5 %, 1/16 W, DA, TP, 1005
2	2007-007771	R909	R-CHIP 0 OHM, 5 %, 1/16 W, DA, TP, 1005
2	2007-001298	R910	R-CHIP 51 ohm, 5 %, 1/16 W, DA, TP, 1005
2	2007-007771	R914	R-CHIP 0 OHM, 5 %, 1/16 W, DA, TP, 1005
2	2007-000172	R915	R-CHIP 10 ohm, 5 %, 1/16 W, DA, TP, 1005
2	2007-000147	R917	R-CHIP 8.2 kohm, 5 %, 1/16 W, DA, TP, 1005
2	2007-007771	R919	R-CHIP 0 OHM, 5 %, 1/16 W, DA, TP, 1005
2	2007-001325	R921	R-CHIP 3.3 kohm, 5 %, 1/16 W, DA, TP, 1005
2	2007-000172	R922	R-CHIP 10 ohm, 5 %, 1/16 W, DA, TP, 1005
2	2007-000143	R923	R-CHIP 4.7 kohm, 5 %, 1/16 W, DA, TP, 1005
2	2007-001284	R926	R-CHIP 4.7 ohm, 5 %, 1/16 W, DA, TP, 1005
2	2007-000172	R927	R-CHIP 10 ohm, 5 %, 1/16 W, DA, TP, 1005
2	2007-001301	R928	R-CHIP 68 ohm, 5 %, 1/16 W, DA, TP, 1005
2	2007-007771	R929	R-CHIP 0 OHM, 5 %, 1/16 W, DA, TP, 1005
2	2007-000172	R930	R-CHIP 10 ohm, 5 %, 1/16 W, DA, TP, 1005
2	2007-000138	R931	R-CHIP 100 ohm, 5 %, 1/16 W, DA, TP, 1005
2	2007-000138	R932	R-CHIP 100 ohm, 5 %, 1/16 W, DA, TP, 1005
2	2007-000153	R934	R-CHIP 22 kohm, 5 %, 1/16 W, DA, TP, 1005
2	2007-001217	R938	R-CHIP 82 ohm, 5 %, 1/16 W, DA, TP, 1005
2	2007-000141	R939	R-CHIP 2.2 kohm, 5 %, 1/16 W, DA, TP, 1005
2	2007-001295	R940	R-CHIP 39 ohm, 5 %, 1/16 W, DA, TP, 1005
2	2007-000172	R941	R-CHIP 10 ohm, 5 %, 1/16 W, DA, TP, 1005
2	2007-000143	R942	R-CHIP 4.7 kohm, 5 %, 1/16 W, DA, TP, 1005
2	2007-000174	R943	R-CHIP 47 ohm, 5 %, 1/16 W, DA, TP, 1005
2	2007-000172	R945	R-CHIP 10 ohm, 5 %, 1/16 W, DA, TP, 1005
2	2007-000172	R946	R-CHIP 10 ohm, 5 %, 1/16 W, DA, TP, 1005
2	2007-000172	R947	R-CHIP 10 ohm, 5 %, 1/16 W, DA, TP, 1005
2	1209-001292	U1001	IC-ETC, LINEAR HD155171NP01EL, QFP, 24P, 165MIL, PLASTIC, 3.6 V, 240MW, -
2	1201-001785	U1002	IC-POWER AMP 08122, -, 8P, -, DUAL, 34DB, -, 7 V, -, -25TO+100C, -, -, -
2	0801-000794	U1003	IC-CMOS LOGIC 7S08, AND GATE, SOT-25, 5P, 63MIL,
2	0504-001042	U1004	TR-DIGITALBCR10PN, NPN/PNP, 250MW, 10K/10 K,
2	0504-001042	U1005	TR-DIGITALBCR10PN, NPN/PNP, 250MW, 10K/10 K,
2	2909-001084	U1006	FILTER-DUPLE X ER942.5MHZ, 897.5MHZ, 1/1.2DB, TP, -, -
2	0504-001042	U1008	TR-DIGITALBCR10PN, NPN/PNP, 250MW, 10K/10 K,
2	1203-001985	U101	IC-VOLTAGE REGULATOR 2005, QFP, 48P, 276MIL, PLASTIC, 1.8/3 V,,

Level	SEC Code	Design LOC	DESCRIPTIONS
2	2203-001124	U1011	C-CERAMIC, CHIP 680 pF, 10 %, 50 V, X7R, TP, 1005, -
2	1203-001917	U102	IC-VOLTAGE REGULATOR 5213, SOT-23, 5P, 50MIL, PLASTIC, 3.3, 222MW, -
2	0801-002212	U103	IC-CMOS LOGIC 7S02, NOR GATE, SC-70, 5P, 49MIL, SINGLE, TP, PLASTIC, -, -, -
2	0505-001423	U104	FET-SILICON FDG6323L, N/P, -, -, -, 0.3 W, SC70-6
2	1203-002127	U201	IC-BATTERY 1734, SOT-23, 6P, 150MIL, PLASTIC, 4.7/5.3 V, -, 0to+70C, 1A, -, TP
2	0506-001052	U202	TR-ARRAY UMH9N, NPN, 2, 150MW, SC-88, TP, 68-
2	1001-001088	U401	IC-ANALOG SWITCH MAX 4544EUT-T, -, SOT-23, 6P, -, SINGLE, 13 V, -
2	0504-001071	U402	TR-DIGITALUMD9N, NPN/PNP, 150MW, 4.7, UMT6, TP
2	1106-001301	U501	IC-SRAM 1337, 262K x 16Bit, CSP, 72P, -, 85nS, 3 V, -, PLASTIC, -25to+85C,
2	0504-001042	U502	TR-DIGITALBCR10PN, NPN/PNP, 250MW, 10K/10 K,
2	0801-000794	U503	IC-CMOS LOGIC 7S08, AND GATE, SOT-25, 5P, 63MIL,
2	1107-001225	U504	IC-FLASH MEMORY 9BV1604, 1M x 16/2M x 8Bit, uBGA, 48P, -, 110nS, 3 V, 10 %,
2	GH09-00017A	U601	IC MICOM-SGHQ100 TR09BFTBE17IN2-DB, SGH-Q100, -, -, -, -, 144K X
2	1209-001219	U602	IC-SENSORLM60C, SOT-23, 3P, 115MIL, PLASTIC
2	1204-001827	U701	IC-SIGNAL PROCESSOR CSP1099R-BF-DT, BGA, 100P, 393MIL, PLASTIC, 3.3
2	0505-001423	U703	FET-SILICON FDG6323L, N/P, -, -, -, 0.3 W, SC70-6
2	0801-002345	U801	IC-CMOS LOGIC 7S04, INVERTER, SOT-353, 5P, 49MIL, SINGLE, TP, PLASTIC, -
2	0504-001042	U802	TR-DIGITALBCR10PN, NPN/PNP, 250MW, 10K/10 K,
2	1209-001308	U901	IC-PLL/SYNTHESISER HD155131TF, QFP, 56P, 290MIL, PLASTIC, 3.3 V, -, -
2	3711-004814	VCON1	CONNECTOR-HEADER -, 2P, -, 2.5 MM, STRAIGHT, AU0.1U, BLK
2	3711-004814	VCON2	CONNECTOR-HEADER -, 2P, -, 2.5 MM, STRAIGHT, AU0.1U, BLK
2	1405-001082	ZD302	VARISTOR 5.6 V, 20A, 1 x 0.5 x 0.6 mm, TP
2	1405-001082	ZD304	VARISTOR 5.6 V, 20A, 1 x 0.5 x 0.6 mm, TP
2	1405-001082	ZD305	VARISTOR 5.6 V, 20A, 1 x 0.5 x 0.6 mm, TP
2	1405-001082	ZD306	VARISTOR 5.6 V, 20A, 1 x 0.5 x 0.6 mm, TP
2	1405-001082	ZD307	VARISTOR 5.6 V, 20A, 1 x 0.5 x 0.6 mm, TP
2	1405-001082	ZD309	VARISTOR 5.6 V, 20A, 1 x 0.5 x 0.6 mm, TP
2	1405-001082	ZD310	VARISTOR 5.6 V, 20A, 1 x 0.5 x 0.6 mm, TP
2	1405-001082	ZD311	VARISTOR 5.6 V, 20A, 1 x 0.5 x 0.6 mm, TP
2	1405-001082	ZD312	VARISTOR 5.6 V, 20A, 1 x 0.5 x 0.6 mm, TP
2	1405-001082	ZD313	VARISTOR 5.6 V, 20A, 1 x 0.5 x 0.6 mm, TP
2	1405-001082	ZD314	VARISTOR 5.6 V, 20A, 1 x 0.5 x 0.6 mm, TP
2	1405-001082	ZD315	VARISTOR 5.6 V, 20A, 1 x 0.5 x 0.6 mm, TP
2	1405-001082	ZD316	VARISTOR 5.6 V, 20A, 1 x 0.5 x 0.6 mm, TP
2	1405-001082	ZD317	VARISTOR 5.6 V, 20A, 1 x 0.5 x 0.6 mm, TP
2	1405-001082	ZD401	VARISTOR 5.6 V, 20A, 1 x 0.5 x 0.6 mm, TP
2	1405-001082	ZD402	VARISTOR 5.6 V, 20A, 1 x 0.5 x 0.6 mm, TP
2	1405-001082	ZD404	VARISTOR 5.6 V, 20A, 1 x 0.5 x 0.6 mm, TP
2	1405-001082	ZD405	VARISTOR 5.6 V, 20A, 1 x 0.5 x 0.6 mm, TP

2. SGH-Q200 Exploded View and its Parts List

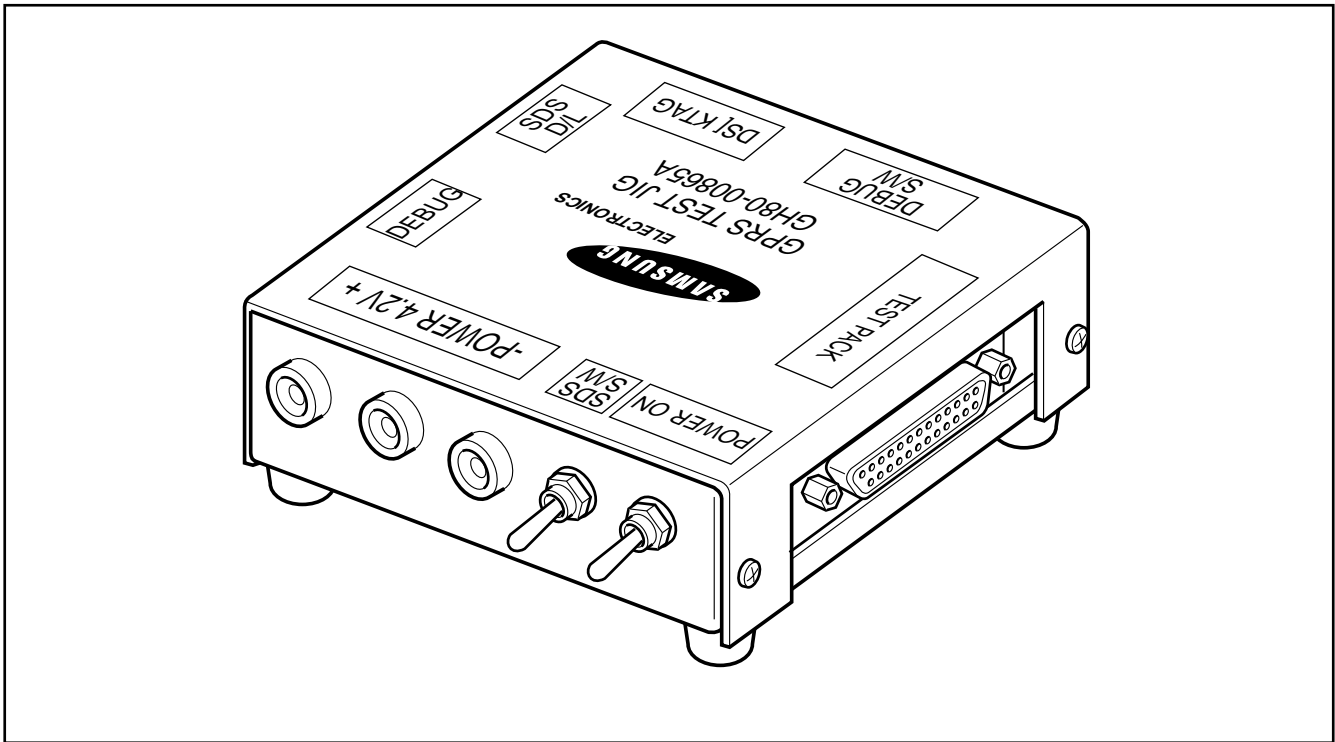
2-1. Cellular phone Exploded View



2-2. Cellular phone Parts List

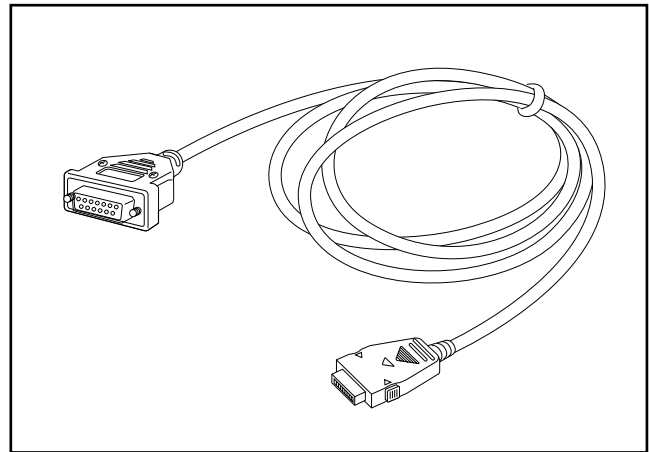
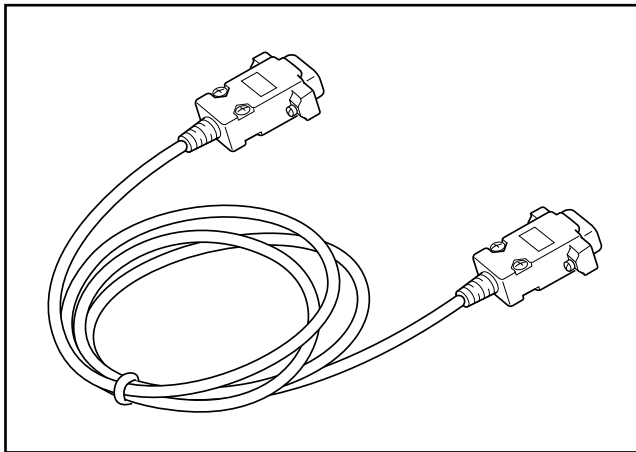
Location No.	Description	SEC CODE	Remark	
		Silver		
1	DUAL LCD WINDOW	GH72-02482A		SA
2	FOLDER UPPER	GH75-01101A		SA
3	CON ASS'Y	GH59-00272A		SA
4	LCD ASS'Y	GH07-00093A		SA
	4-1	MOTOR	3101-001280	SA
	4-2	SPEAKER	3001-001251	SA
5	FOLDER LOWER	GH75-01102A		SA
6	LCD WINDOW	GH72-02484A		SA
7	SCREW (M1.4 X 2)	6001-000883		SA
8	SCREW DUMMY	GH68-00370C		SA
9	SUA, VOLUME KEY ASS'Y	GH75-01100A		SA
10	SUA FRONT COVER	GH75-01097A		SA
11	MIC	GH59-00138A		SA
12	KEY PAD ASS'Y	GH75-01099A		SA
13	SHIELD COVER	GH75-01735A		SA
14	KEY FPCB	GH59-00273A		SA
15	MAIN PBA	GH92-00951A		SA
16	SUA, SHIELD COVER-B	GH75-01583A		SA
17	SCREW (M1.4 X 4)	GH73-00704A		SA
18	ANTEENA	6001-000464		SA
19	RF COVER	GH42-00138A		SA
20	SUA, REAR COVER	GH73-00703A		SA
21	REAR COVER	GH75-01103A		SA
22	SCREW (M1.7 X 5)	6001-001346		SA
23	BATTERY	GH43-00376A	900mAh	SA

2-3. Test Jig (GH80-00865A)



Data Cable

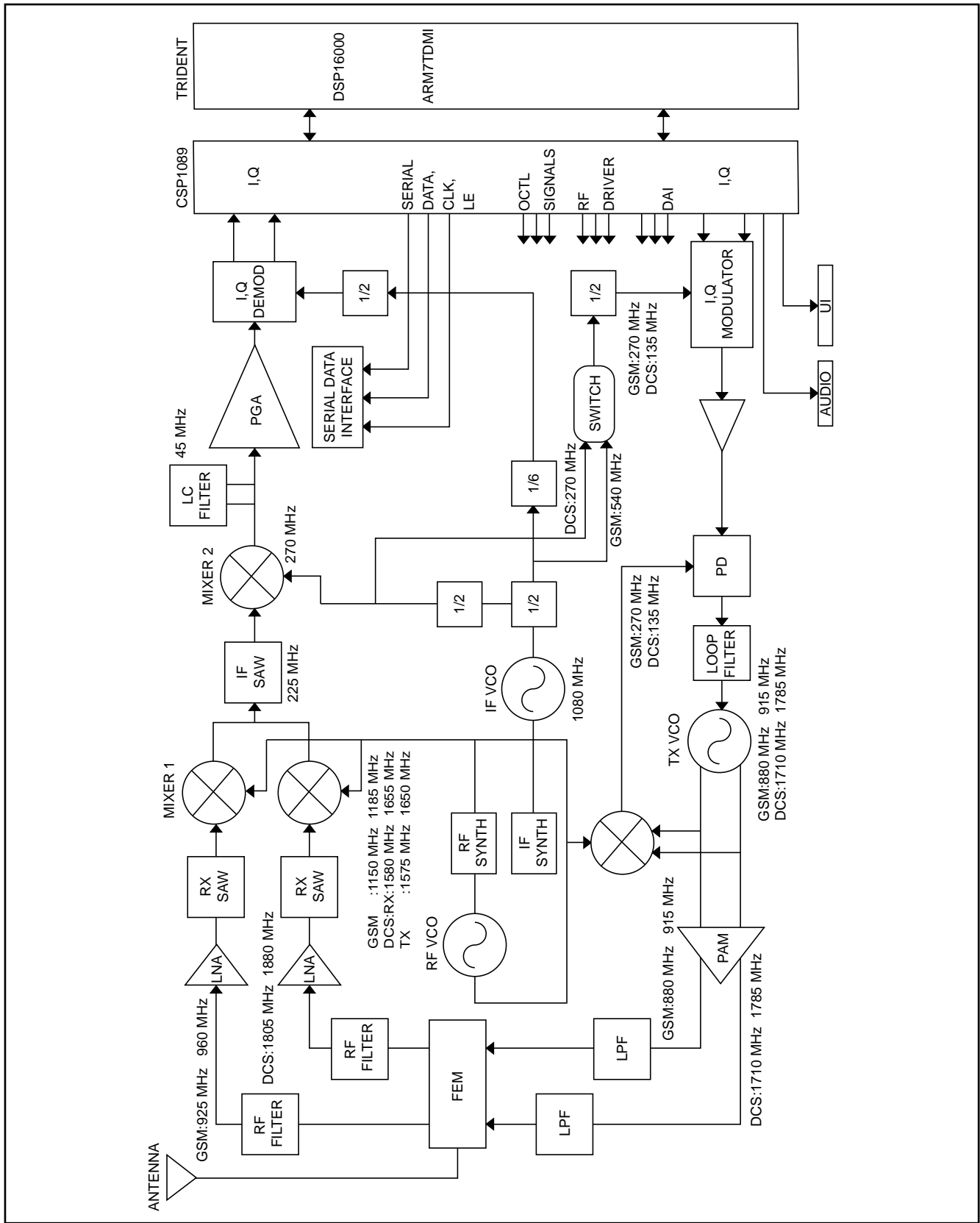
Test Cable (GH39-00127A)



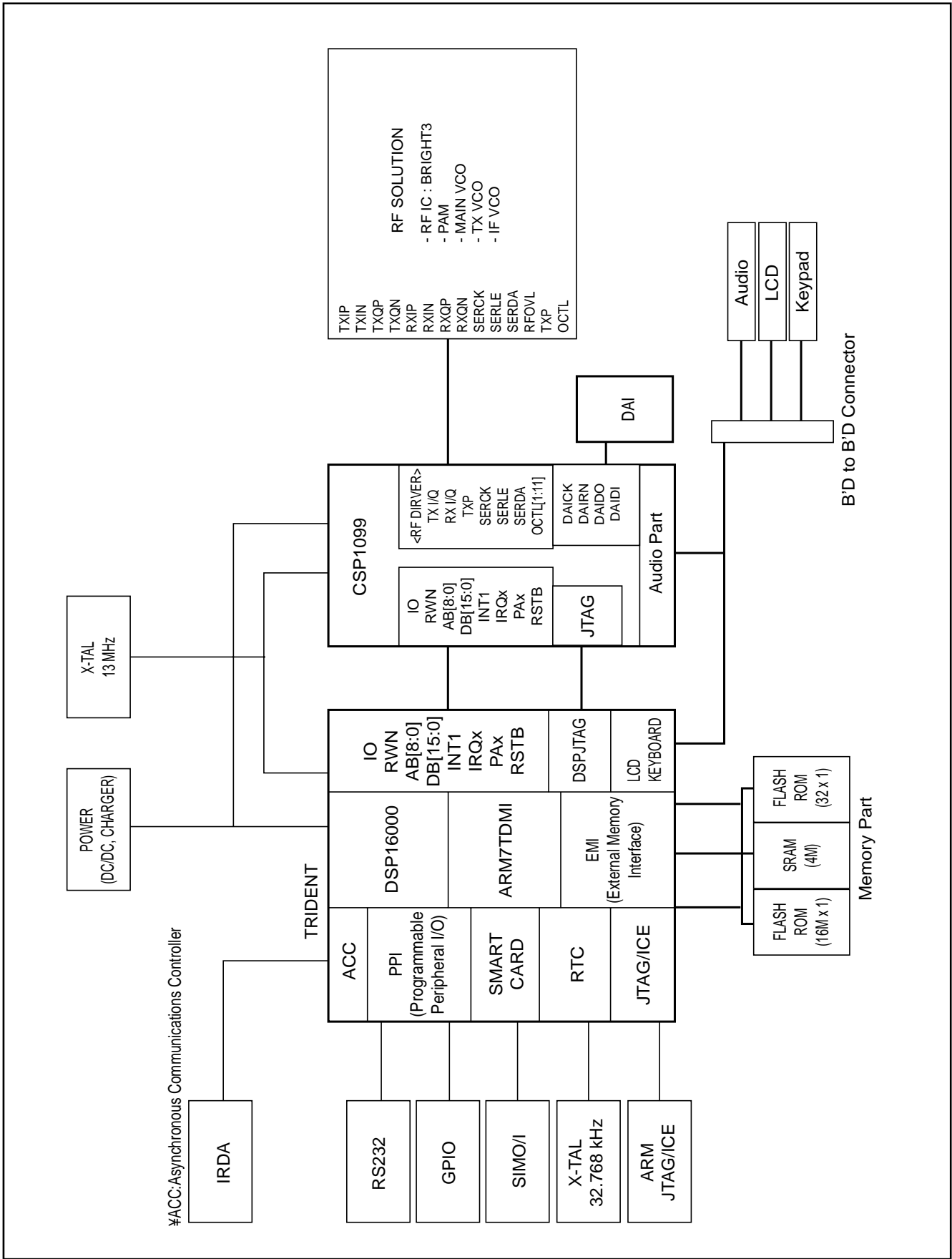
	SWITCH				
MODE	POWER ON	SDS S/W	DEBUG S/W	SDS D/L	DEBUG
D/L	HIGH	LOW	LOW	CONNECT	N.C
CAL	HIGH	LOW	LOW	CONNECT	N.C

3. SGH-Q200 Block Diagrams

3-1. RF Solution Block Diagram

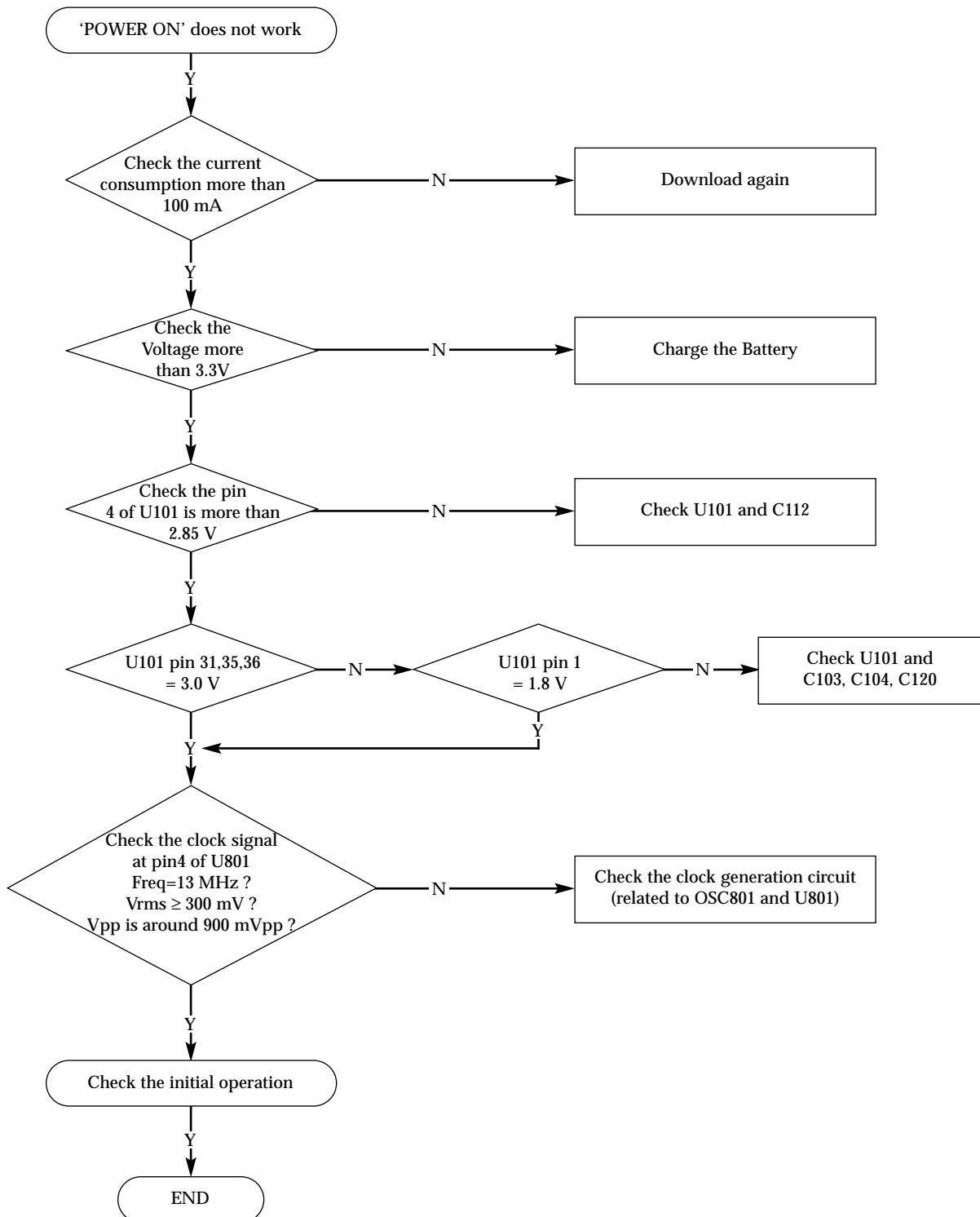


3-2. Base Band Solution Block Diagram

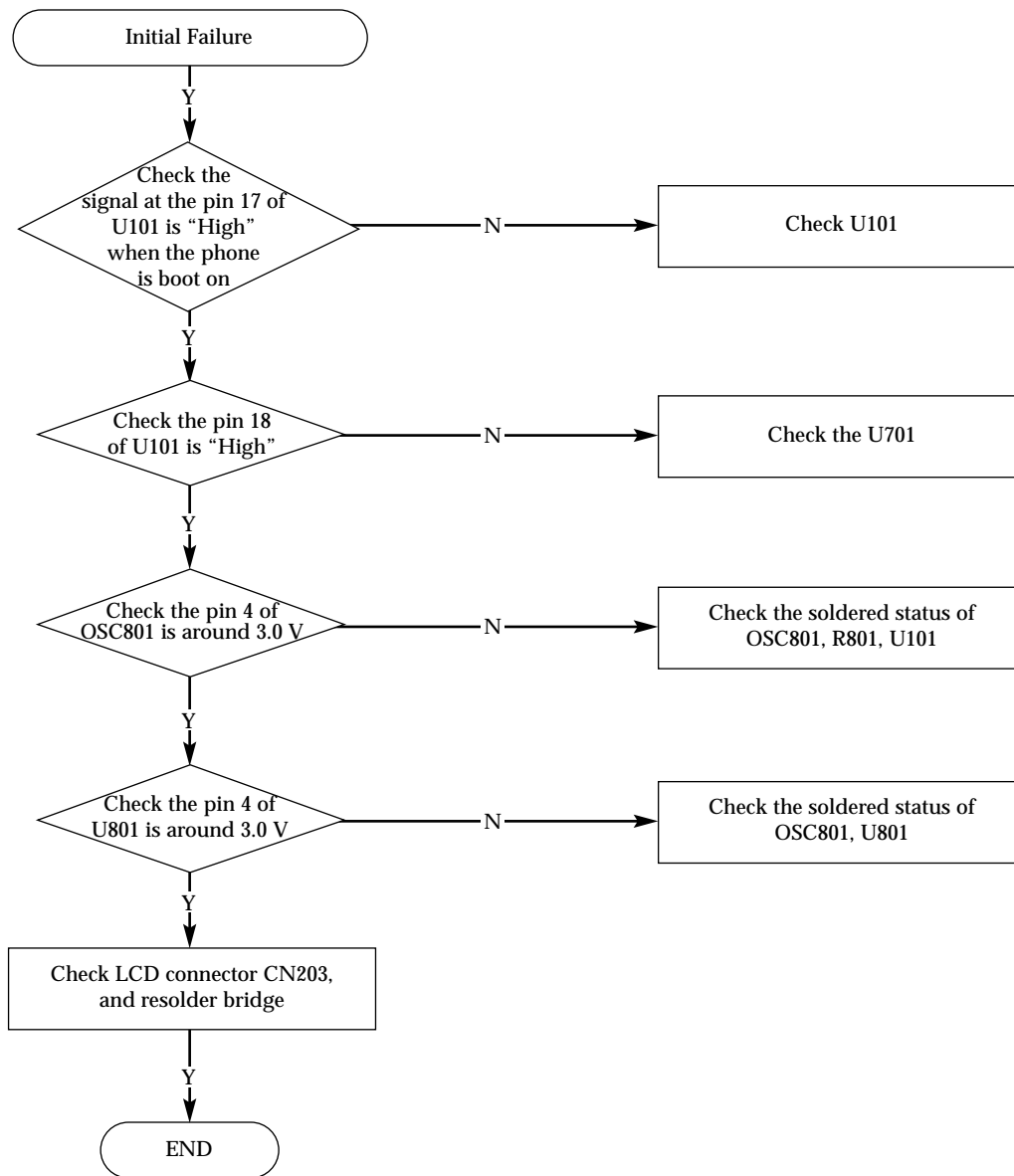


5.SGH-Q200 Flow Chart of Troubleshooting and Circuit Diagrams

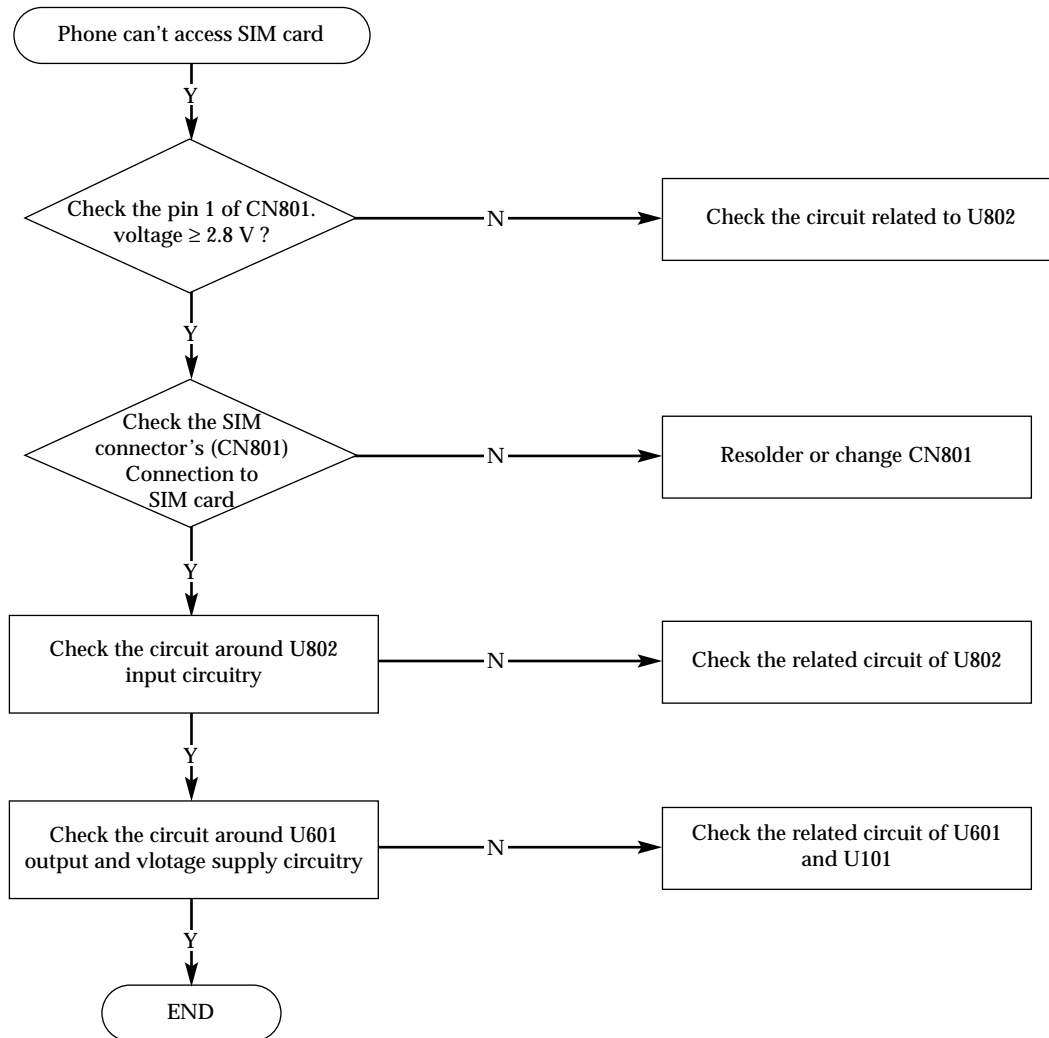
5-1. Power ON



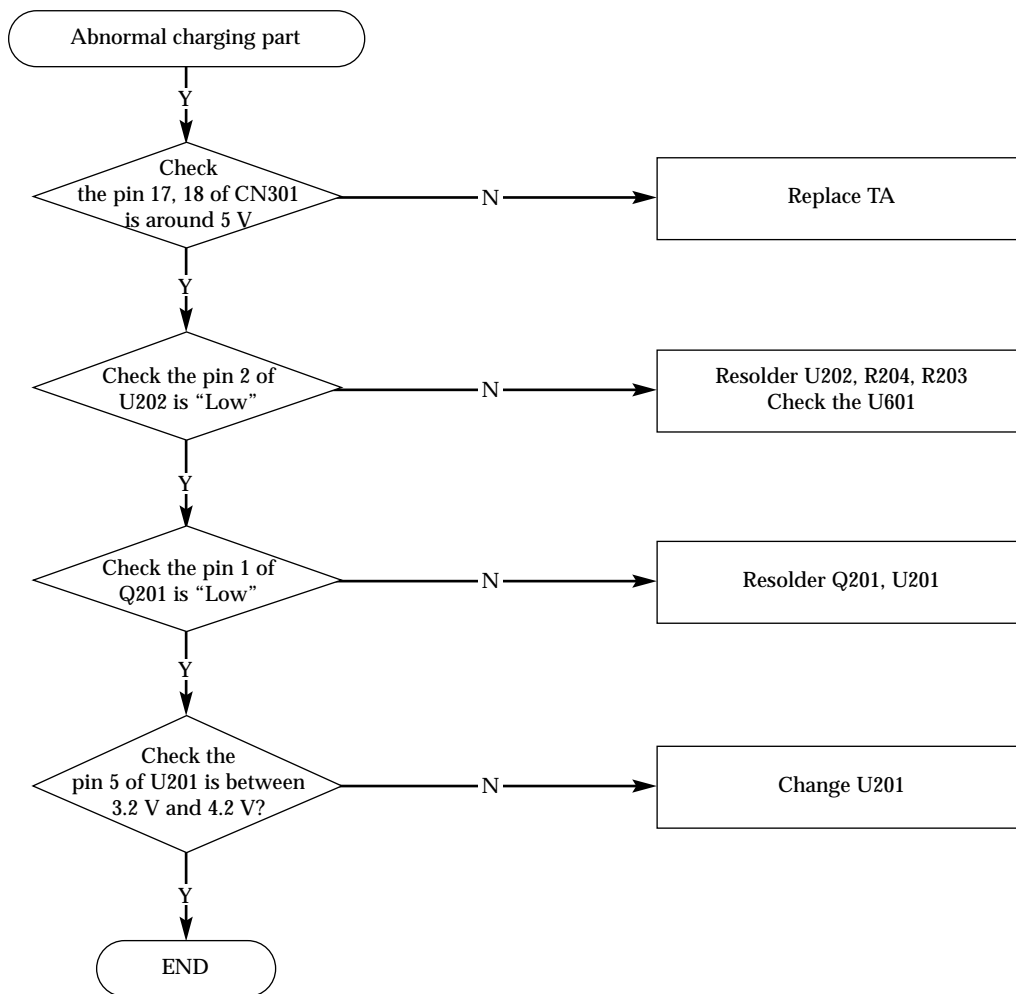
5-2. Initial



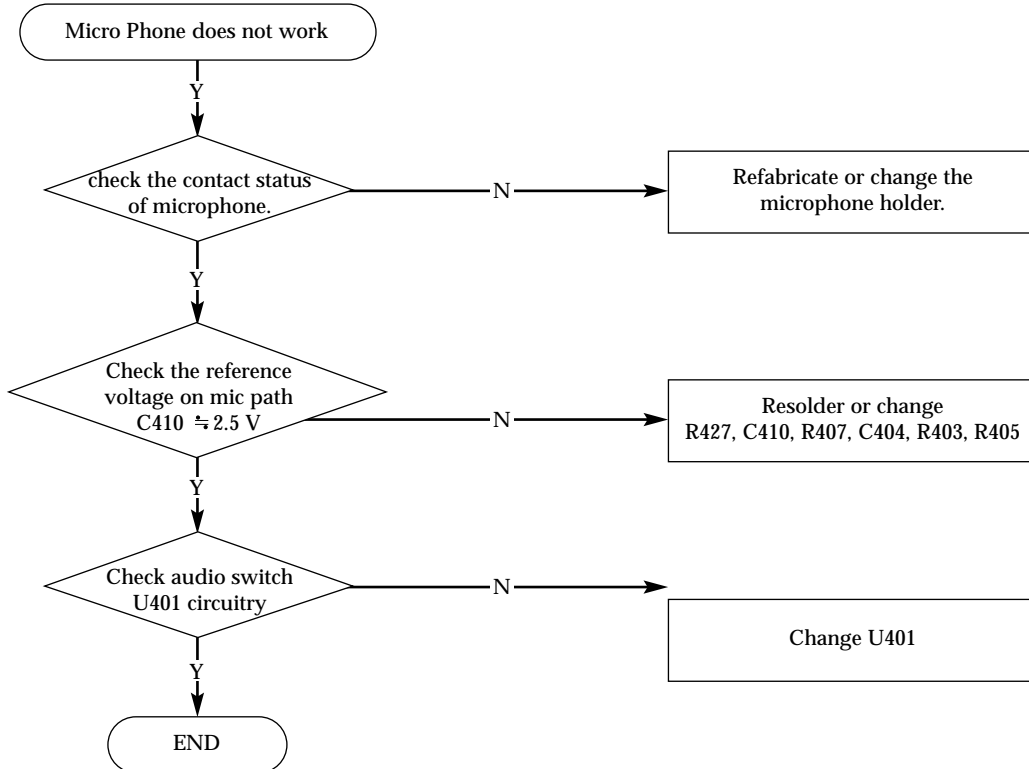
5-3. Sim Part



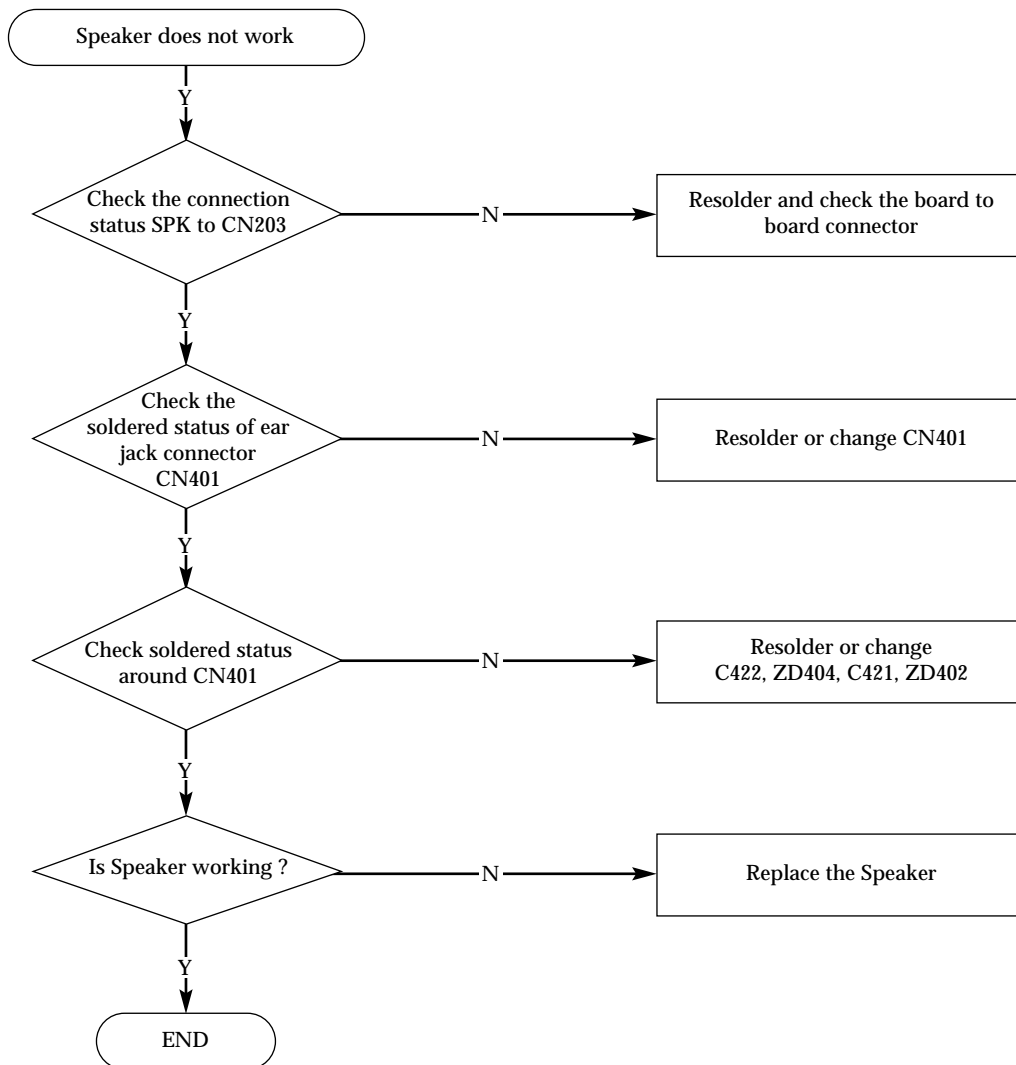
5-4. Charging Part



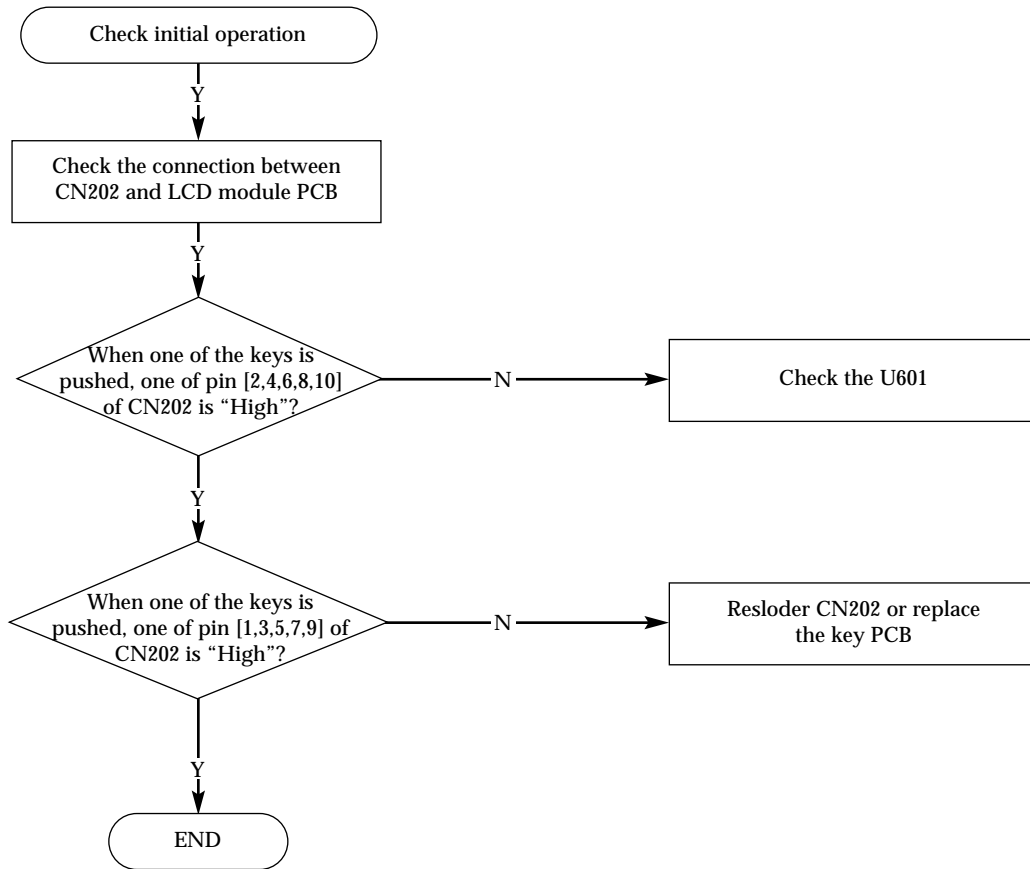
5-5. Microphone Part



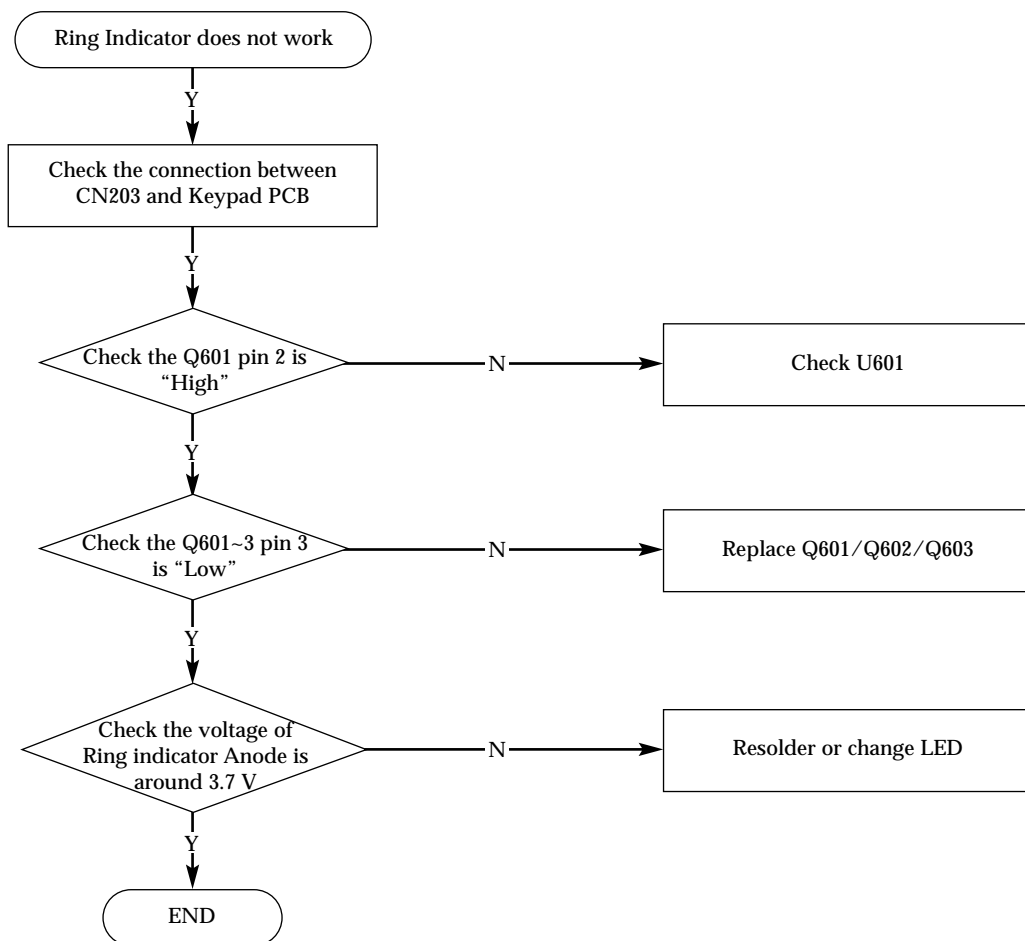
5-6. Speaker Part



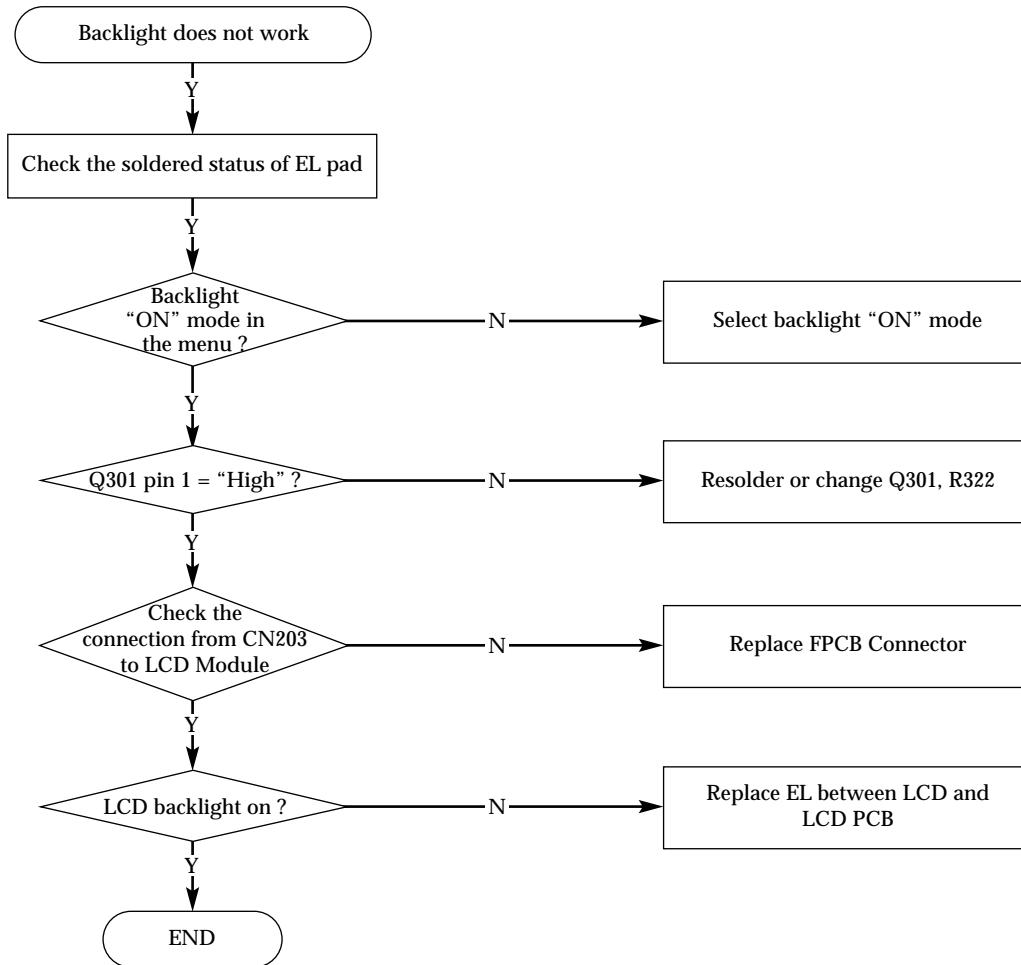
5-7. Key Data Input



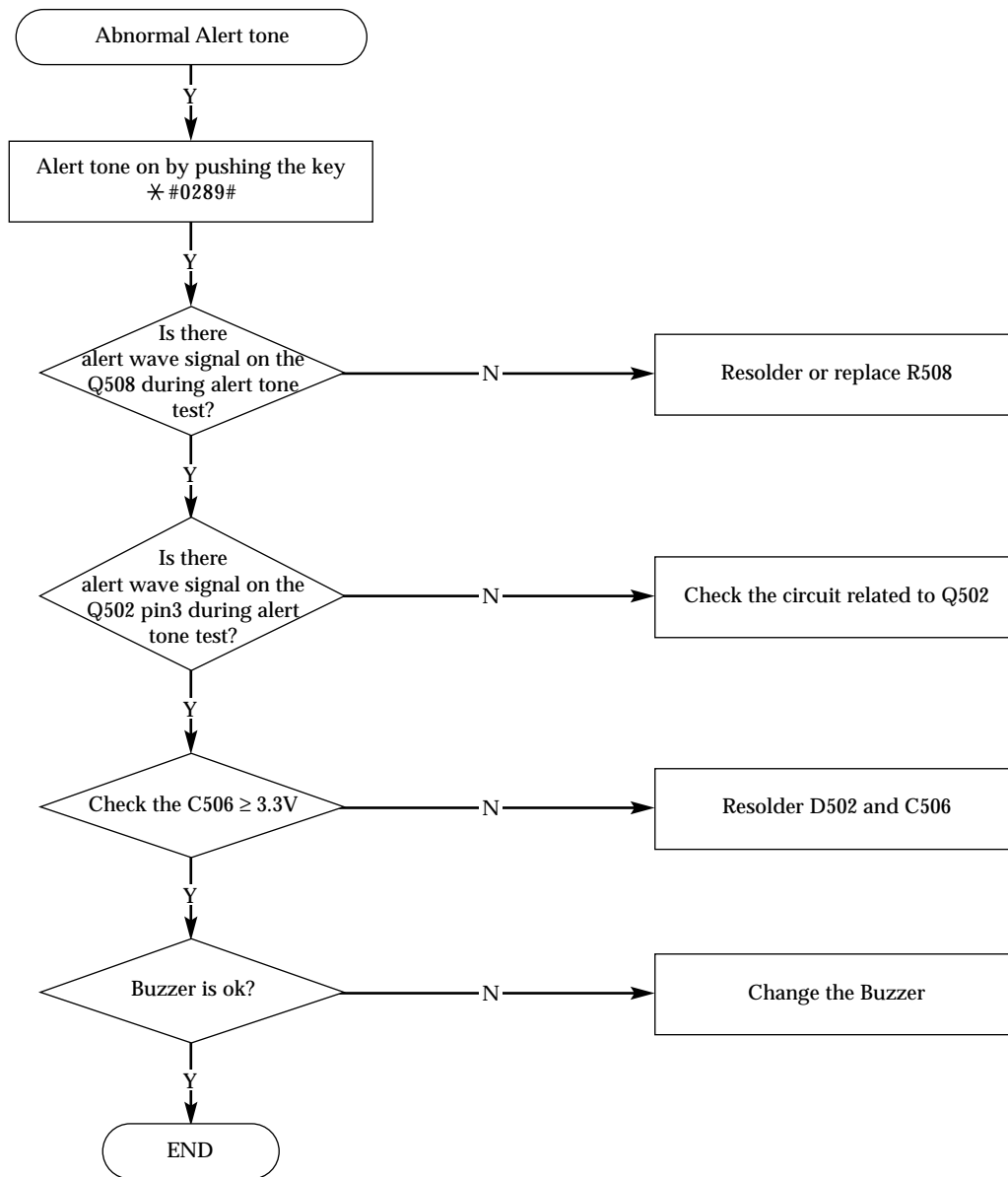
5-8. Ring Indicator



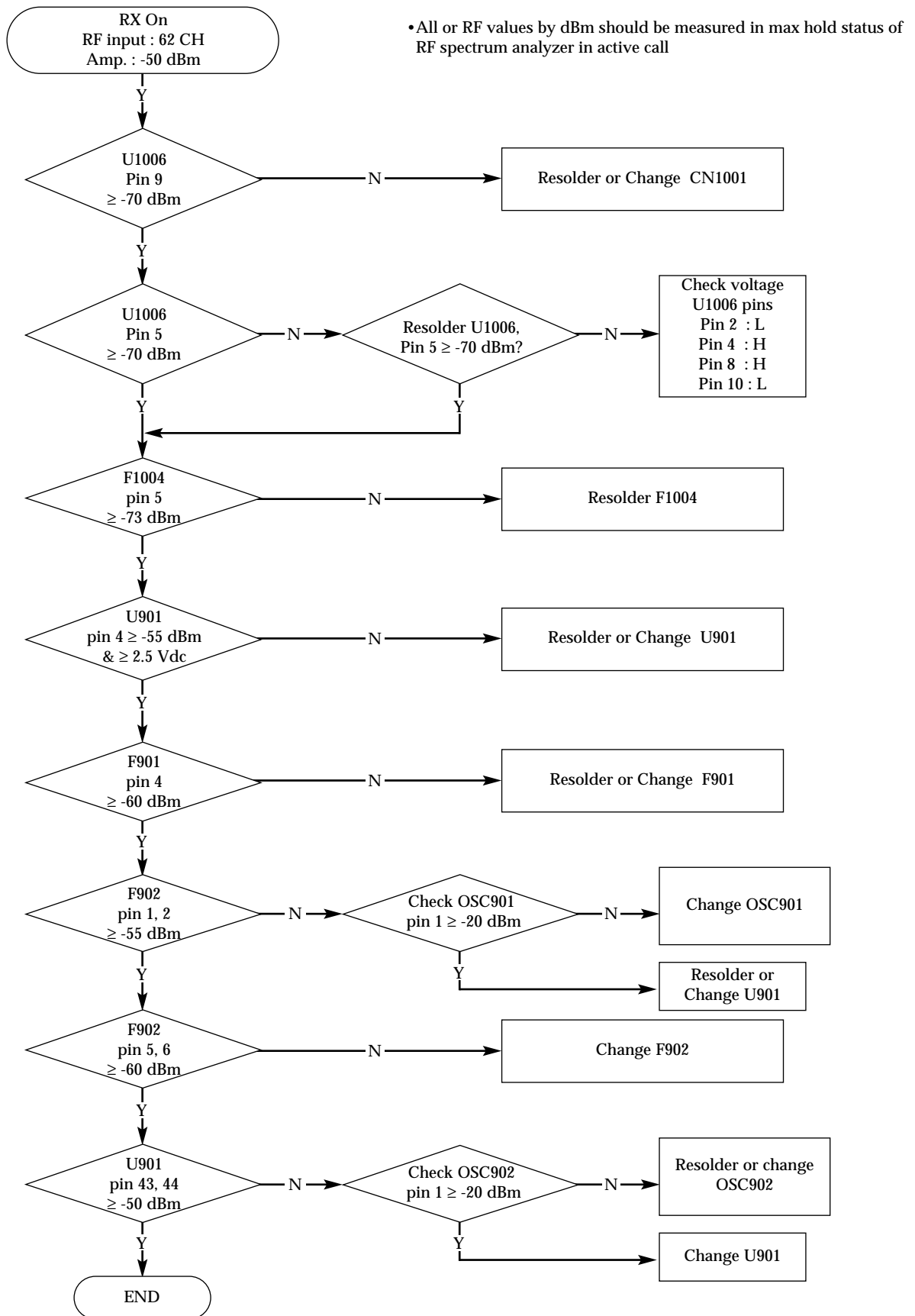
5-9. Back Light



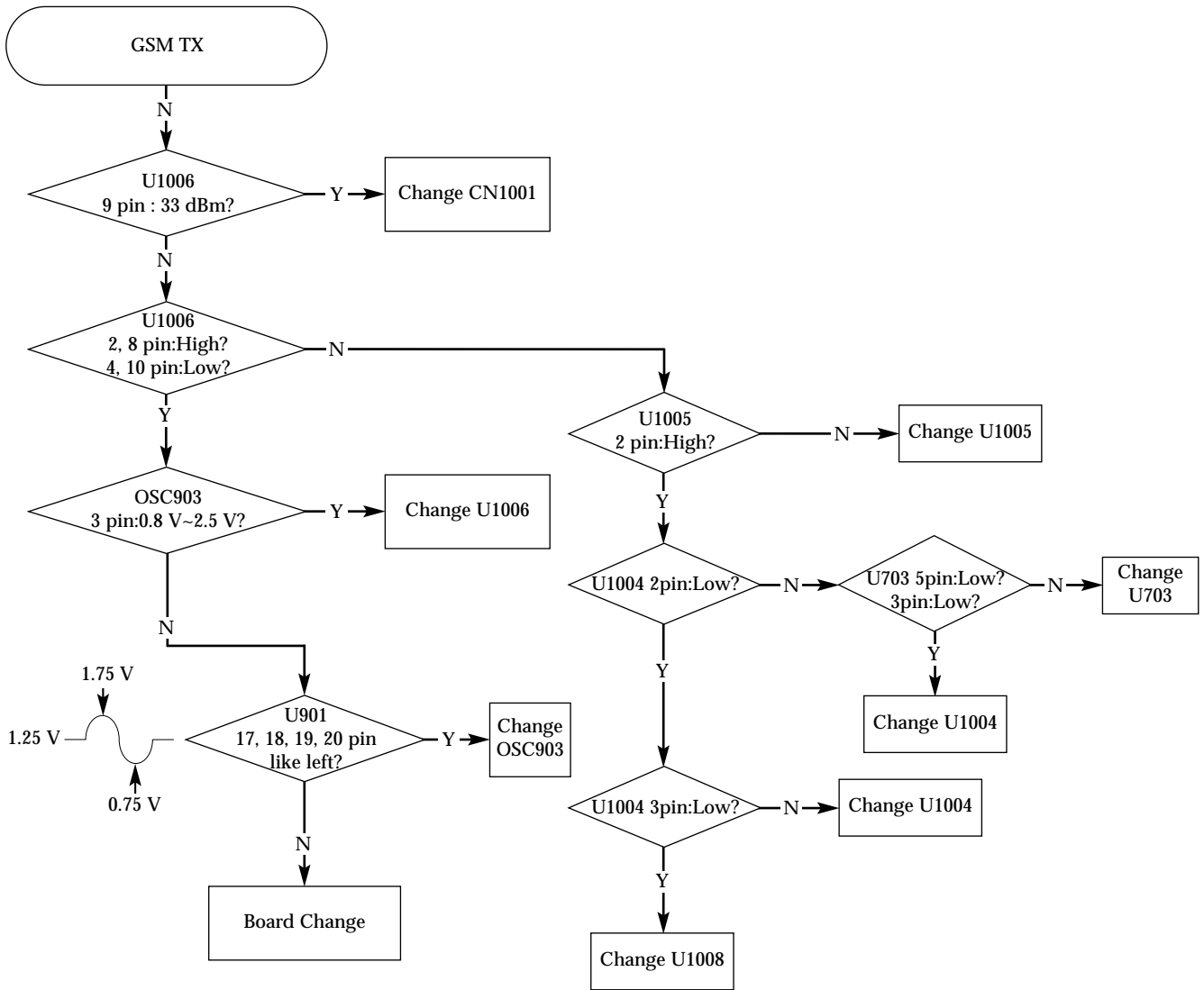
5-10. Alert Tone



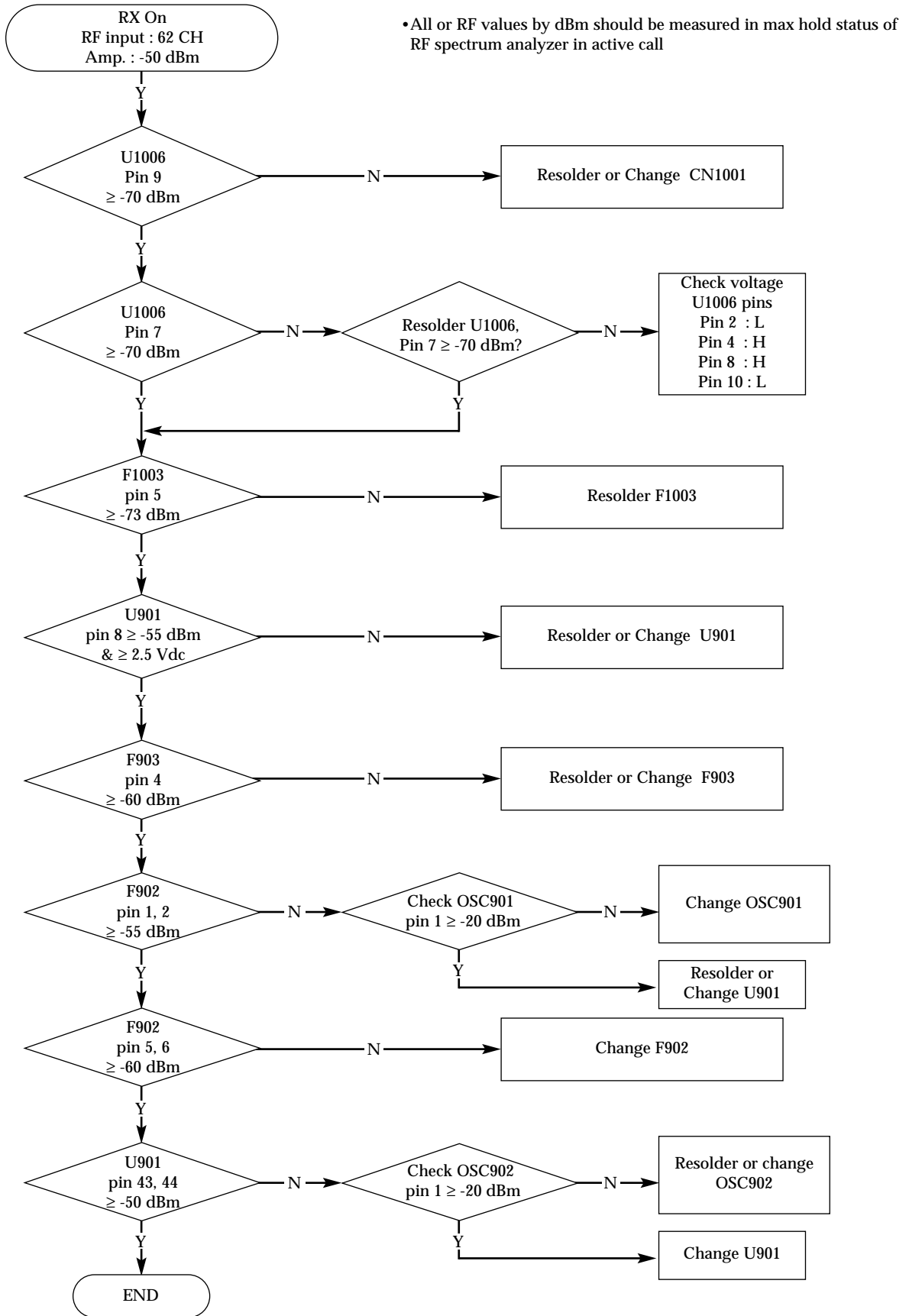
5-11. GSM Receiver



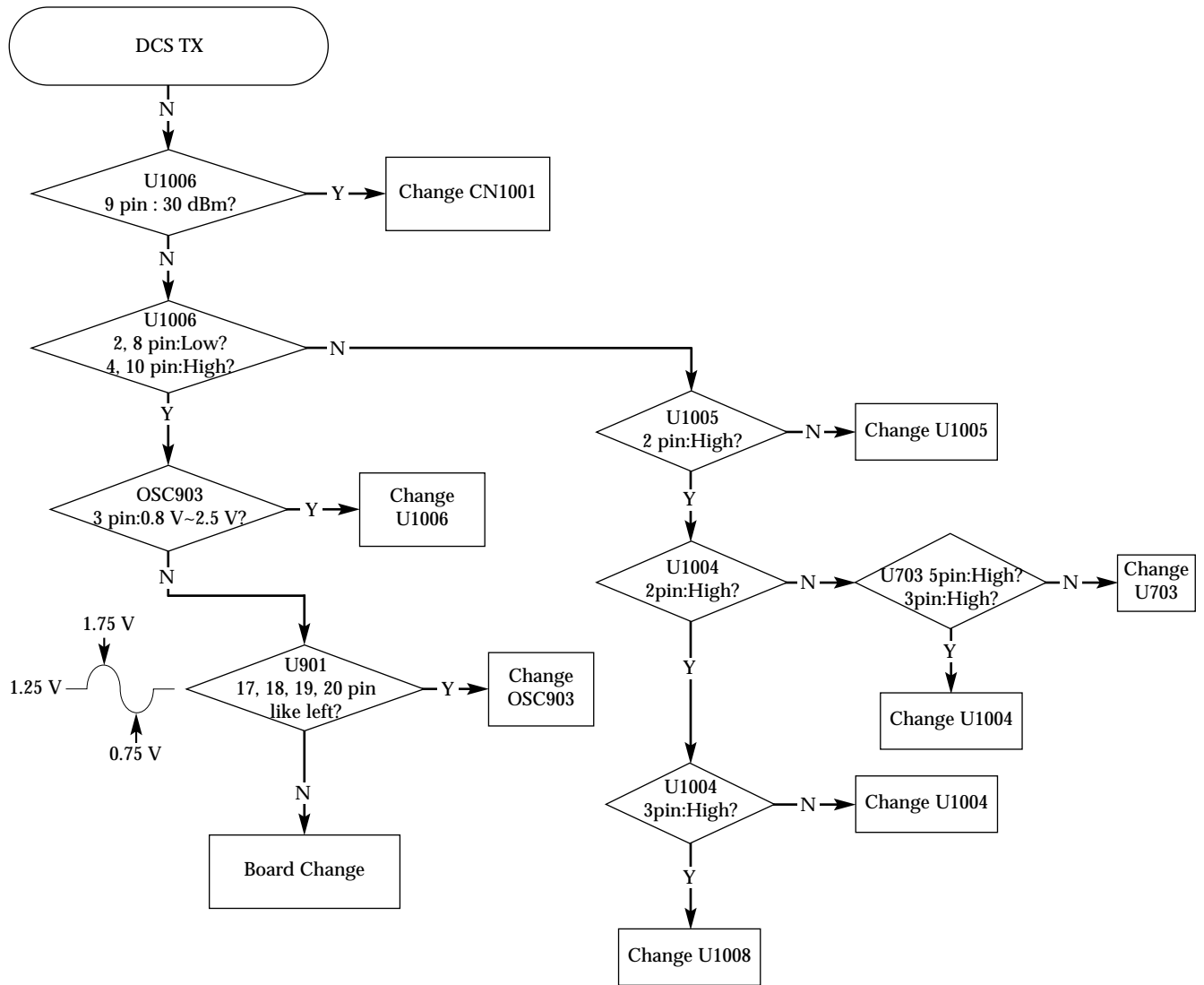
5-12. GSM Transmitter



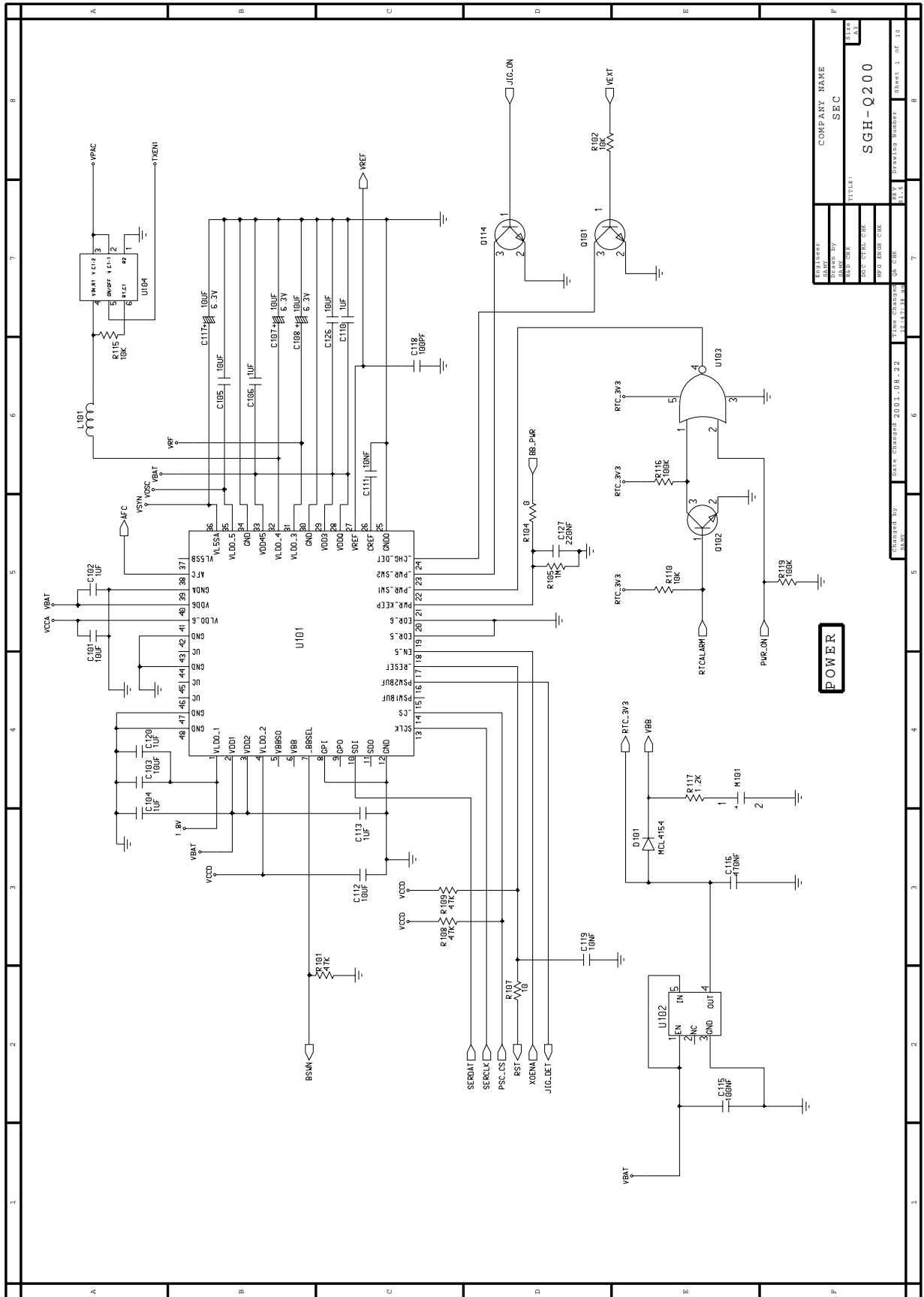
5-13. DCS Receiver



5-14. DCS Transmitter



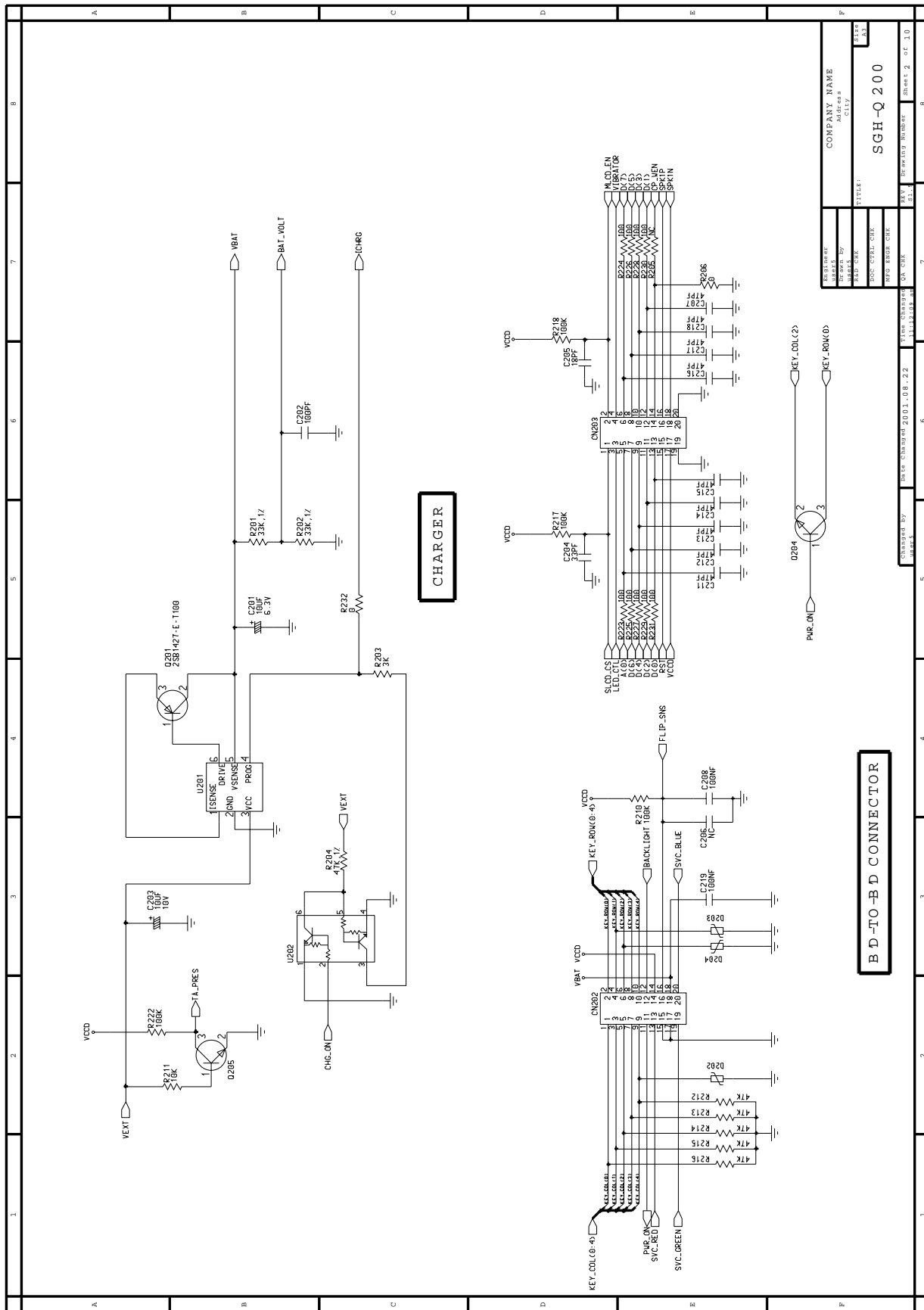
5-15. Power Circuit Diagram



REVISED BY	DATE CHANGED	FIGURE NUMBER	REV	REVISED NUMBER	SHEET 1 OF 11
SEC	2003.08.22	10-12-34	1.5		
COMPANY NAME			SEC		
TITLE			SGH-Q200		
DESIGNED BY	CHECKED BY	DATE CHANGED	REV	REVISED NUMBER	SHEET 1 OF 11

POWER

5-16. Charger & B'D-TO-B'D Connector Circuit Diagram



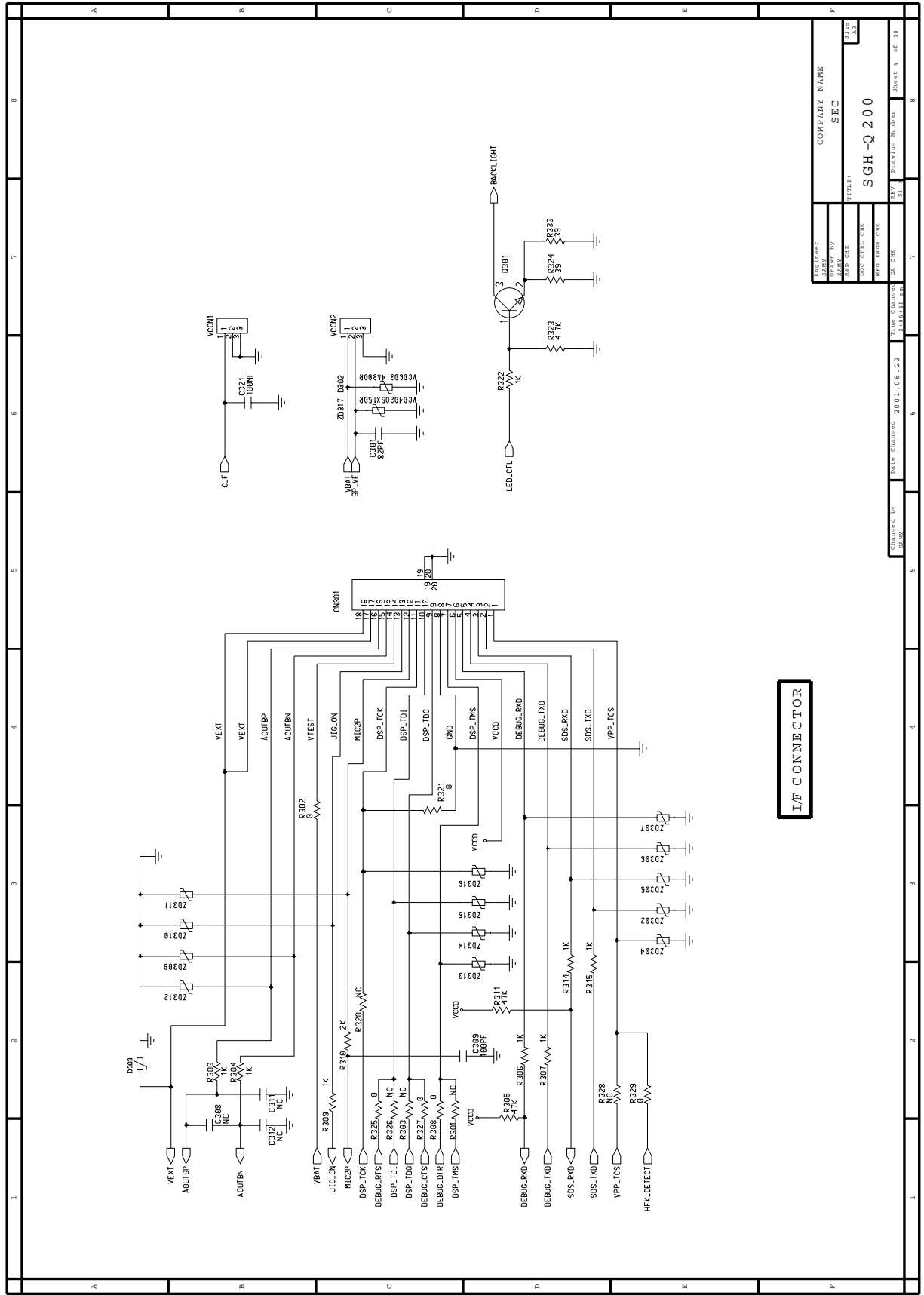
ANALYST:	DATE:	SCALE:	REV:
DESIGNED BY:	DATE:	SCALE:	REV:
DRP. CHK:	DATE:	SCALE:	REV:
REP. ENG. CHK:	DATE:	SCALE:	REV:
REP. ENG. CHK:	DATE:	SCALE:	REV:
REP. ENG. CHK:	DATE:	SCALE:	REV:
REP. ENG. CHK:	DATE:	SCALE:	REV:

COMPANY NAME
MAHMOUD
CITY

TITLE
SGH-Q 200

Sheet 2 of 10

5-17. I/F Connector Circuit Diagram

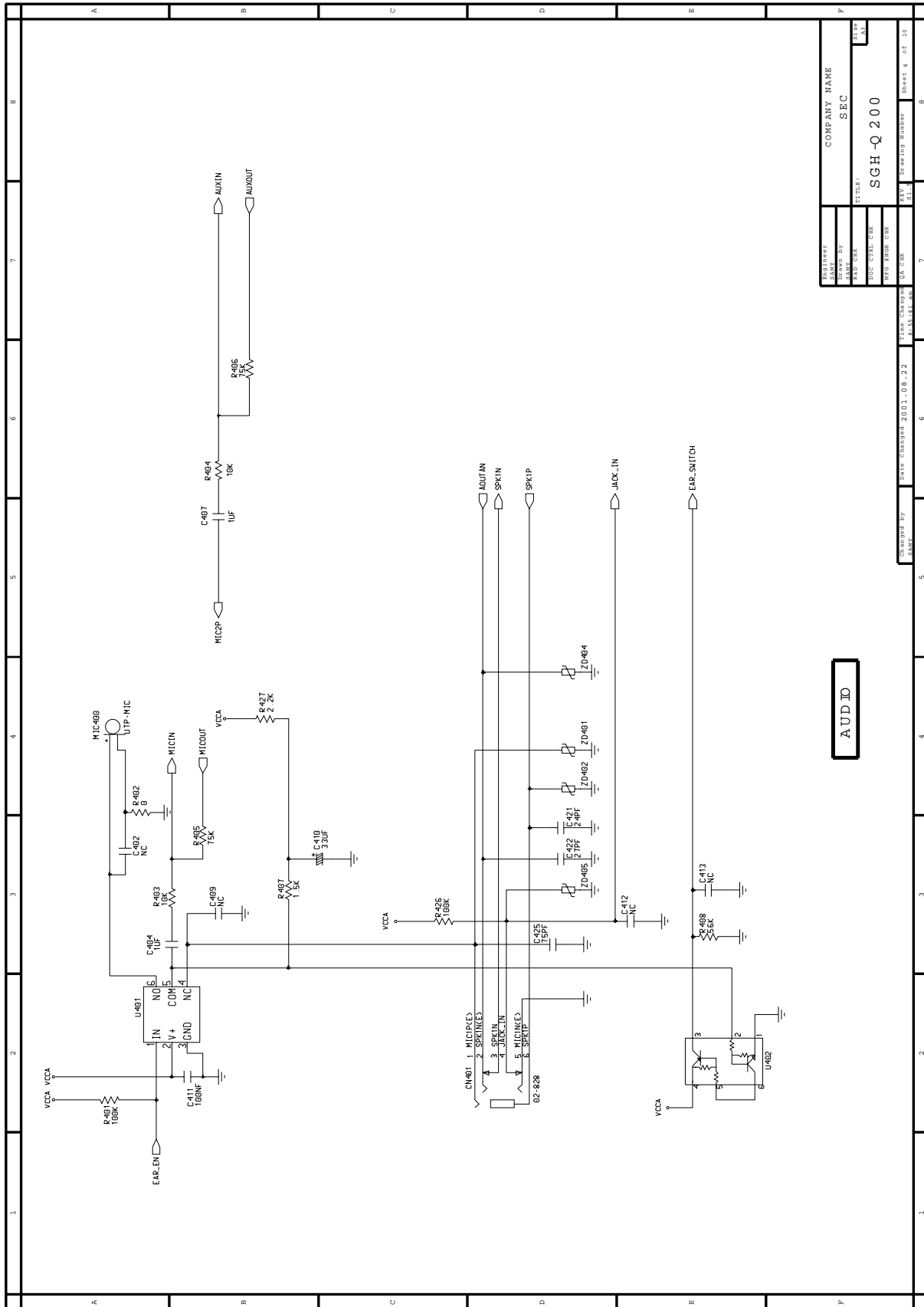


I/F CONNECTOR

EQUIPMENT	COMPANY NAME	REV.	DATE
DRAWN BY	SEC		
CHECKER	TITLE	REV.	DATE
DOC. CTRL. CHK	SGH-Q200	REV.	DATE
REF. ERROR CHK		REV.	DATE
APP. CHECK		REV.	DATE

CHANGED BY	DATE CHANGED	FILE NUMBER
	2001.08.22	3-15-08-02

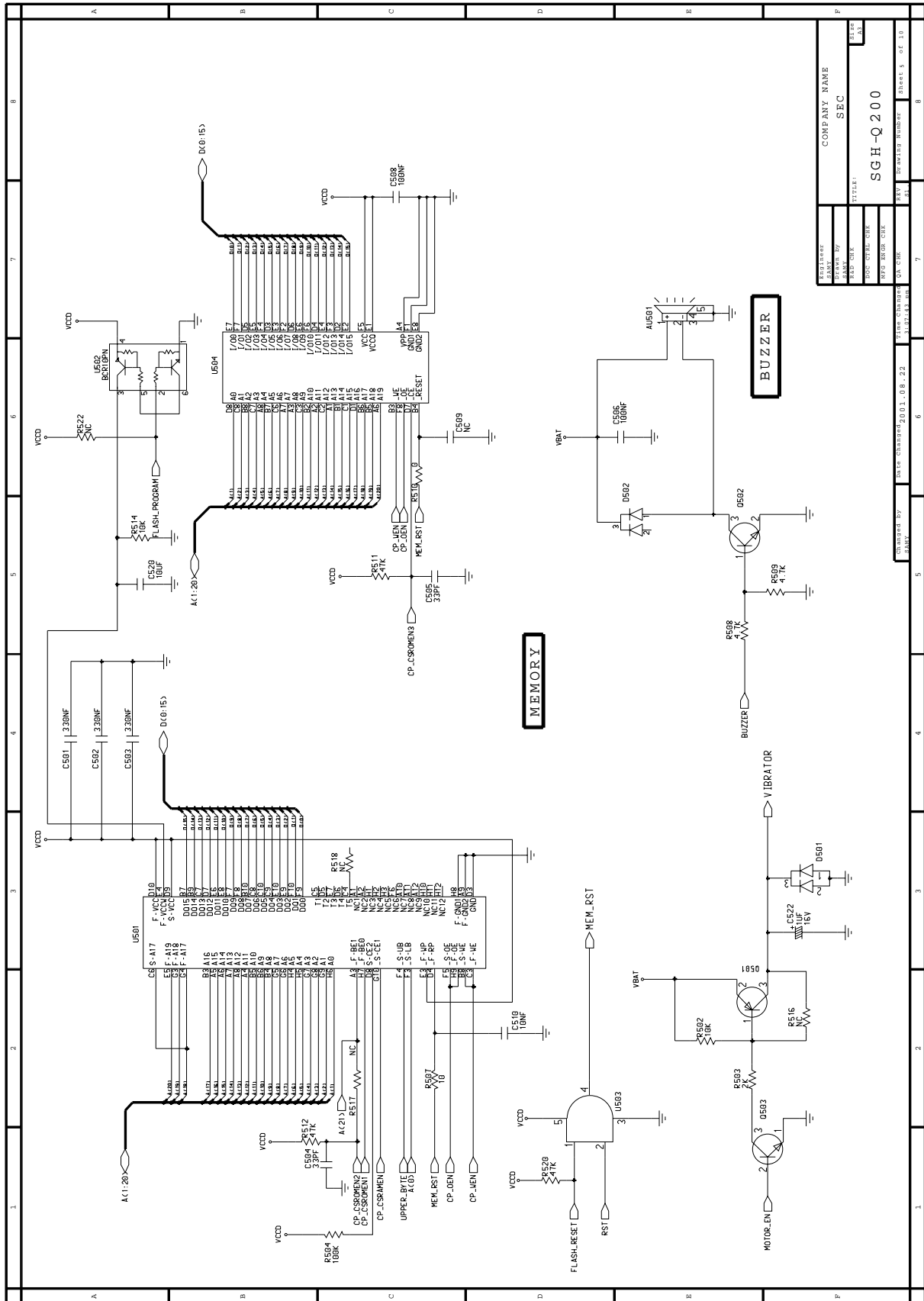
5-18. Audio Circuit Diagram



COMPANY NAME	SEC
TITLE	SGH-Q 200
DESIGNED BY	
CHECKED BY	
DATE	
REV	
REVISED NUMBER	
SHEET # OF 13	

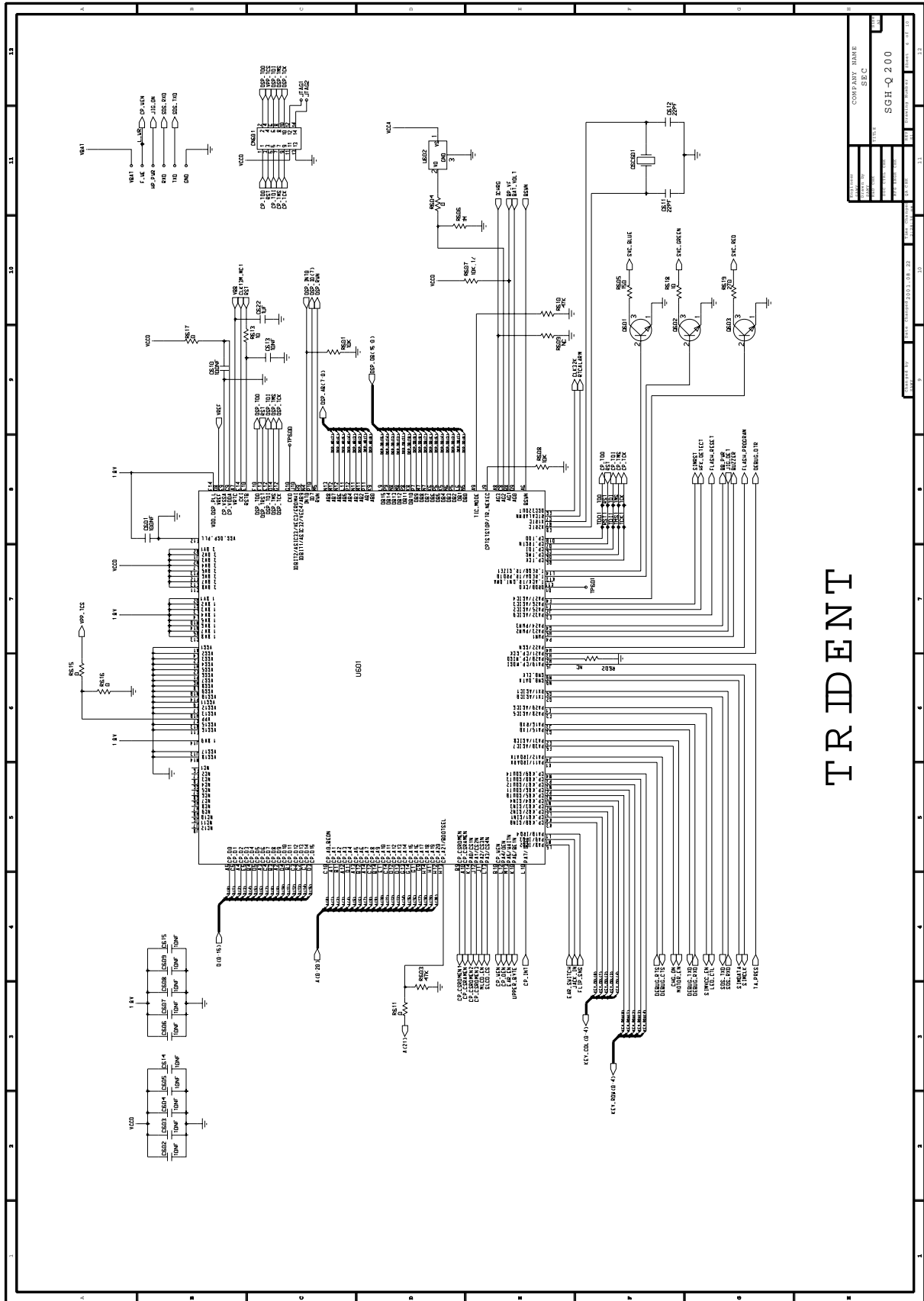
AUDIO

5-19. Memory & Buzzer Circuit Diagram

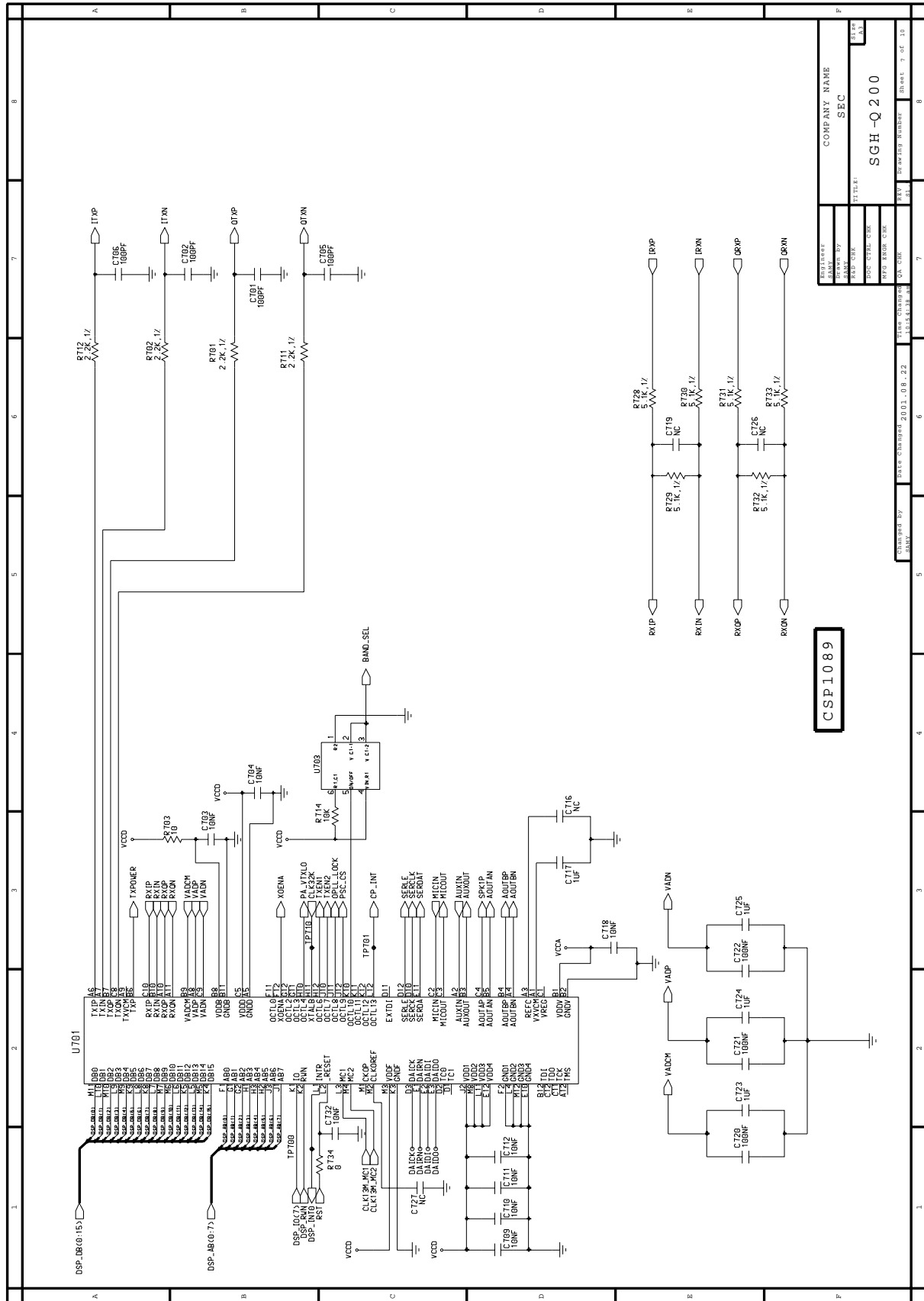


REVISION	DATE CHANGED	BY	REASON
COMPANY NAME		SEC	
MODEL		SGH-Q200	
DRAWN			
CHECKED			
DATE CHANGED		10.11.08.22	
DRAWN NUMBER		01	
INFO ENTER DATE			
PAGE NO.		3 of 10	

5-20. Trident Circuit Diagram



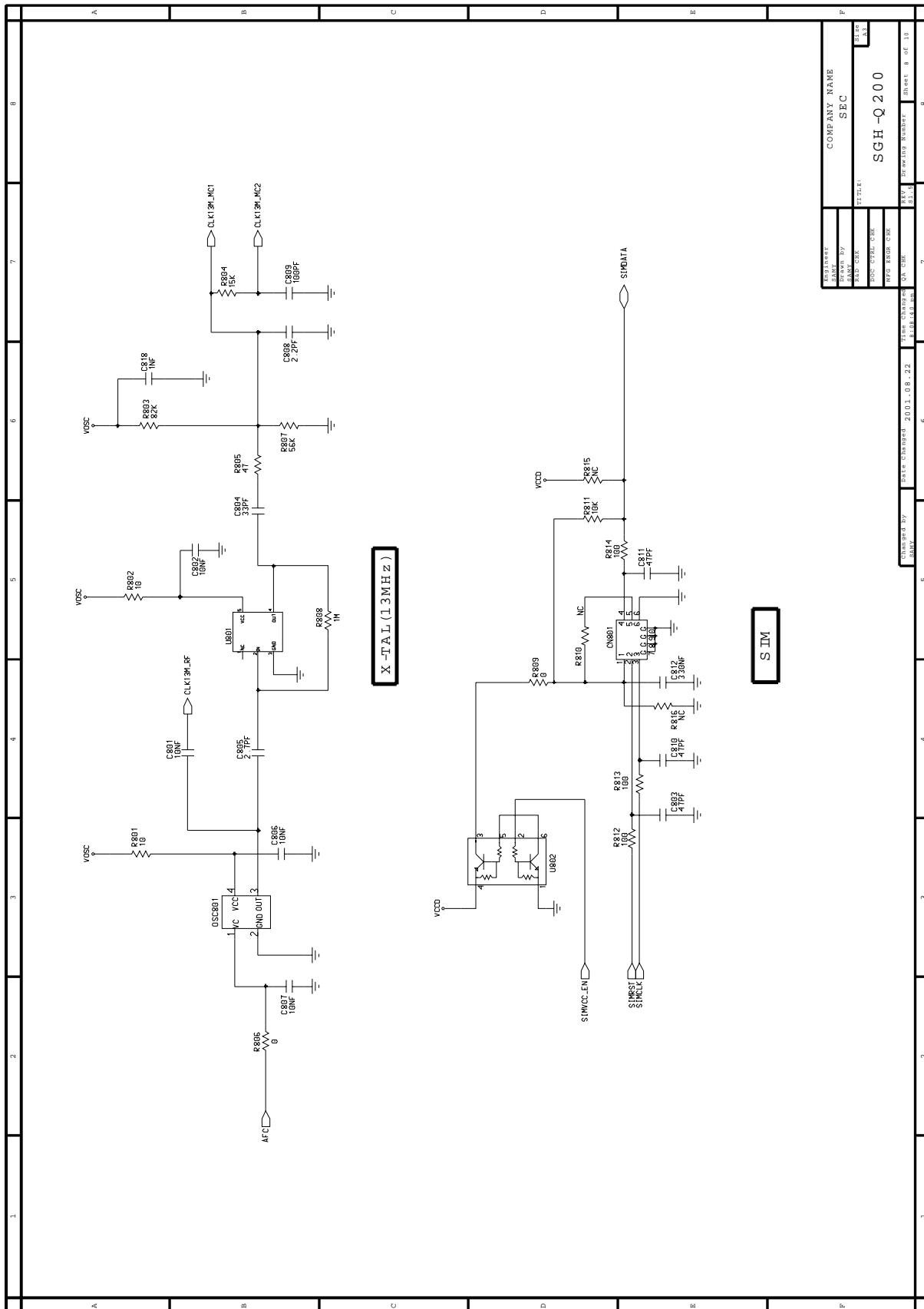
5-21. CSP1089 Circuit Diagram



REVISION	REV. 1.0
DESIGNED BY	Y. J. CHUNG
CHECKED BY	Y. J. CHUNG
DATE	2003-09-22
FILE NAME	CSP1089
COMPANY NAME	SFC
PROJECT NAME	SGH-Q200
DESIGNED BY	Y. J. CHUNG
CHECKED BY	Y. J. CHUNG
DATE	2003-09-22
FILE NAME	CSP1089
COMPANY NAME	SFC
PROJECT NAME	SGH-Q200

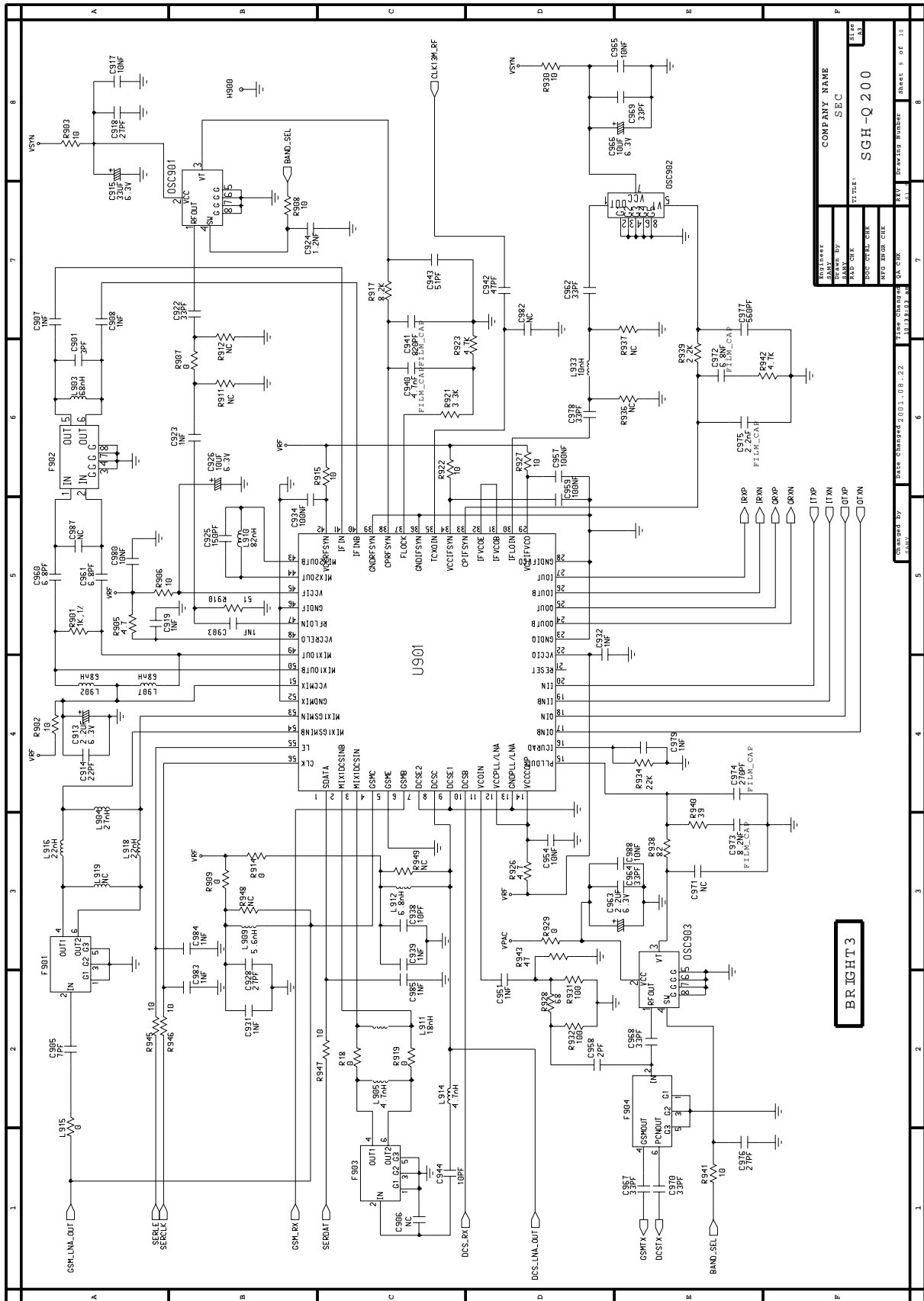
CSP1089

5-22. X-TAL(13 MHz) & SIM Circuit Diagram

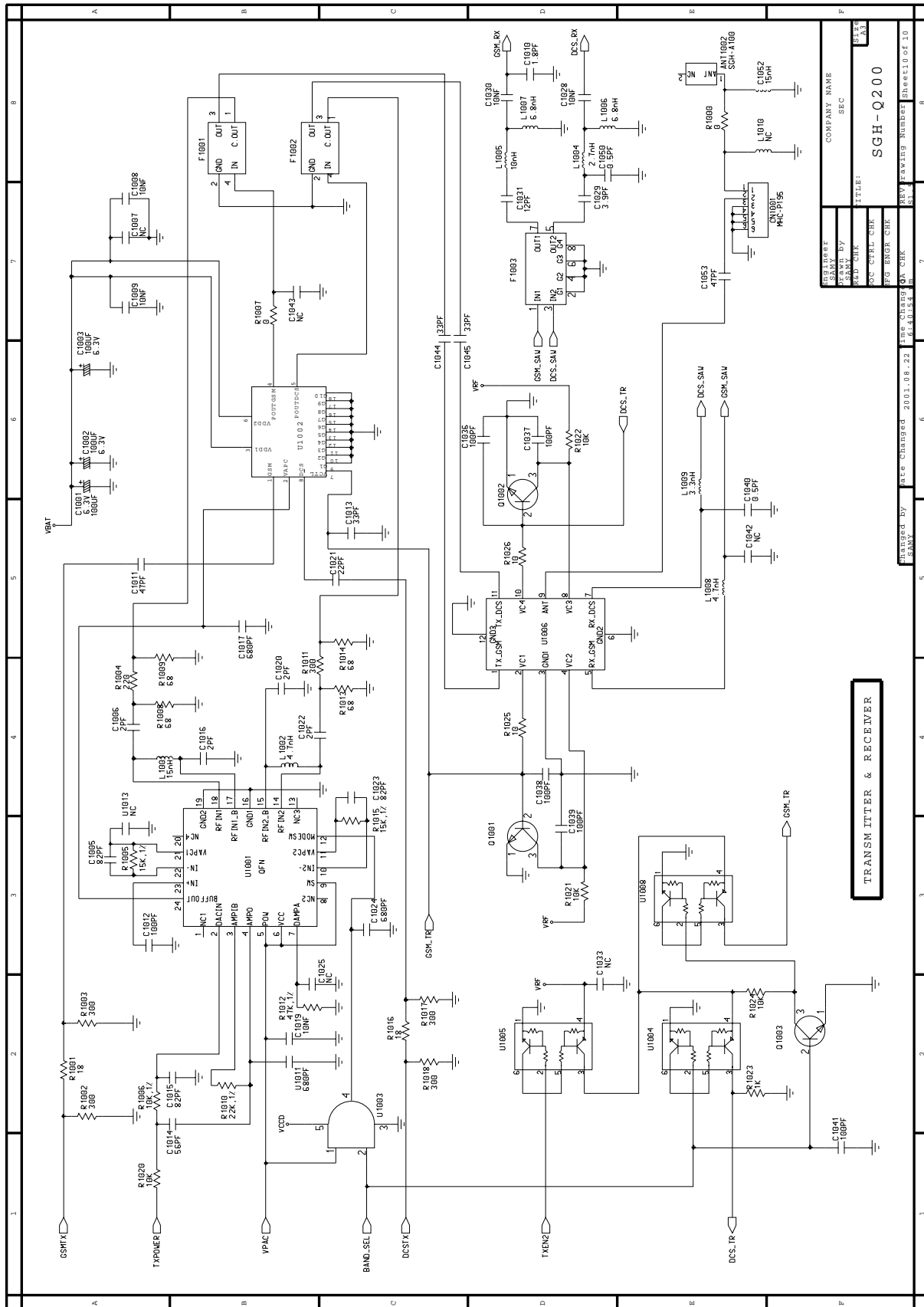


DESIGNED BY	SEC
CHECKED BY	SEC
DATE	2003.08.22
COMPANY NAME	SEC
PROJECT NAME	SGH-Q200
DATE OF ISSUE	2003.08.22
DATE OF REVISE	
REVISED NUMBER	01
REVISED BY	
REVISED DATE	

5-23. Bright3 Circuit Diagram



5-24. Transmitter & Receiver Circuit Diagram



TRANSMITTER & RECEIVER

DESIGNED BY	SEC	COMPANY NAME	SGH-Q200
DRAWN BY	SEC	TITLE	SGH-Q200
CHECKED BY	SEC	REV	REV
DATE	SEC	REV	REV

